

ABflo® 594 Rabbit anti-Mouse VCAM-1/CD106 mAb

Catalog No.: A25750

Basic Information

Observed MW

Calculated MW

38kDa/81kDa

Category

Primary antibody

Applications

FC

Cross-Reactivity

Mouse

CloneNo number

ARC65686-ABflo594

Conjugate

ABflo® 594. Ex:588nm. Em:604nm.

Recommended Dilutions

FC 5 µl per 10⁶ cells in
100 µl volume

Background

Predicted to enable integrin binding activity and primary amine oxidase activity. Acts upstream of or within several processes, including cellular response to glucose stimulus; chorio-allantoic fusion; and heterophilic cell-cell adhesion via plasma membrane cell adhesion molecules. Located in apical plasma membrane. Is expressed in several structures, including brain; embryo mesenchyme; extraembryonic component; heart; and hemolymphoid system. Human ortholog(s) of this gene implicated in hypertension. Orthologous to human VCAM1 (vascular cell adhesion molecule 1).

Immunogen Information

Gene ID

22329

Swiss Prot

P29533

Immunogen

Recombinant fusion protein containing a sequence corresponding to amino acids 25-310 of mouse VCAM-1/CD106 (NP_035823.3).

Synonyms

CD106; Vcam-1

Contact

 | 400-999-6126

 | cn.market@abclonal.com.cn

 | www.abclonal.com.cn

Product Information

Source

Rabbit

Isotype

IgG

Purification

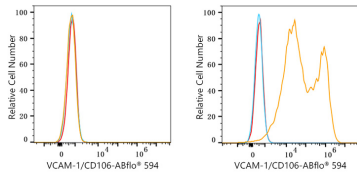
Affinity purification

Storage

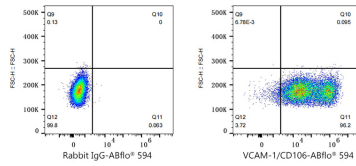
Store at 2-8°C. Avoid freeze.

Buffer: PBS with 0.03% proclin300,0.2% BSA,pH7.3.

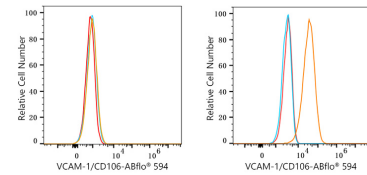
Validation Data



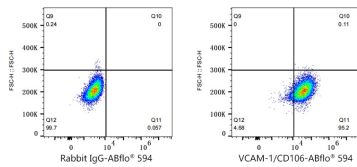
Flow cytometry: 1×10^6 293T cells (negative control, left) and 293T (Transfection, right) cells were surface-stained with ABflo® 594 Rabbit anti-Mouse VCAM-1/CD106 mAb (A25750, 5 μ l/Test, orange line) or ABflo® 594 Rabbit IgG isotype control (A23821, 5 μ l/Test, blue line). Non-fluorescently stained cells were used as blank control (red line).



Flow cytometry: 1×10^6 293T (Transfection) cells were surface-stained with ABflo® 594 Rabbit IgG isotype control (A23821, 5 μ l/Test, left) or ABflo® 594 Rabbit anti-Mouse VCAM-1/CD106 mAb (A25750, 5 μ l/Test, right).



Flow cytometry: 1×10^6 RAW 264.7 cells (negative control, left) and MS1 cells (right) were surface-stained with ABflo® 594 Rabbit anti-Mouse VCAM-1/CD106 mAb (A25750, 5 μ l/Test, orange line) or ABflo® 594 Rabbit IgG isotype control (A23821, 5 μ l/Test, blue line). Non-fluorescently stained cells were used as blank control (red line).



Flow cytometry: 1×10^6 MS1 cells were surface-stained with ABflo® 594 Rabbit IgG isotype control (A23821, 5 μ l/Test, left) or ABflo® 594 Rabbit anti-Mouse VCAM-1/CD106 mAb (A25750, 5 μ l/Test, right).