

# CD300a Rabbit mAb

Catalog No.: A25752 **Recombinant**

## Basic Information

### Observed MW

40-70kDa

### Calculated MW

33kDa/20kDa/12kDa/16.5kDa

### Category

Primary antibody

### Applications

WB,FC,ELISA

### Cross-Reactivity

Human

### CloneNo number

ARC67454

## Background

This gene encodes a member of the CD300 glycoprotein family of cell surface proteins found on leukocytes involved in immune response signaling pathways. This gene is located on chromosome 17 in a cluster with all but one of the other family members. Multiple transcript variants encoding different isoforms have been found for this gene.

## Recommended Dilutions

**WB** 1:500 - 1:2000

**FC** 1:1000 - 1:5000

**ELISA** Recommended starting concentration is 1 µg/mL. Please optimize the concentration based on your specific assay requirements.

## Immunogen Information

### Gene ID

11314

### Swiss Prot

Q9UGN4

### Immunogen

Recombinant protein (or fragment). This information is considered to be commercially sensitive.

### Synonyms

IRC1; IRC2; CLM-8; IRp60; IGSF12; CMRF35H; CMRF-35H; CMRF35-H; CMRF35H9; CMRF35-H9; IRC1/IRC2; CMRF-35-H9

## Contact

 | 400-999-6126

 | [cn.market@abclonal.com.cn](mailto:cn.market@abclonal.com.cn)

 | [www.abclonal.com.cn](http://www.abclonal.com.cn)

## Product Information

### Source

Rabbit

### Isotype

IgG

### Purification

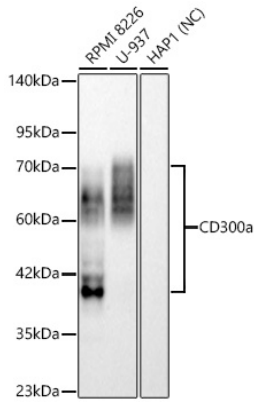
Affinity purification

### Storage

Store at -20°C. Avoid freeze / thaw cycles.

Buffer: PBS containing 50% glycerol and 0.05% BSA, preserved with proclin300 or sodium azide (as specified on the Certificate of Analysis), pH 7.3.

## Validation Data



Western blot analysis of various lysates using CD300a Rabbit mAb (A25752) at 1:1000 dilution incubated overnight at 4°C.

Secondary antibody: HRP-conjugated Goat anti-Rabbit IgG (H+L) (AS014) at 1:10000 dilution.

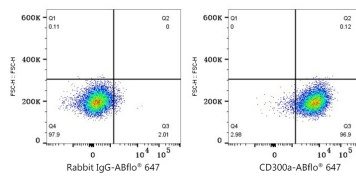
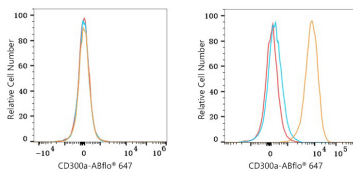
Lysates/proteins: 25 µg per lane.

Blocking buffer: 3% nonfat dry milk in TBST.

Detection: ECL Basic Kit (RM00020)

Negative control (NC): HAP1

Exposure time: 90 s.



Flow cytometry:  $1 \times 10^6$  Jurkat cells (negative control, left) and  $1 \times 10^6$  RPMI 8226 cells (right) were surface-stained with CD300a Rabbit mAb (A25752, 2 µg/mL, orange line) or Rabbit IgG isotype control (AC042, 2 µg/mL, blue line), followed by followed by Alexa Fluor® 647 conjugated goat anti-rabbit pAb staining. Non-fluorescently stained cells were used as blank control (red line).

Flow cytometry:  $1 \times 10^6$  RPMI 8226 cells were surface-stained with Rabbit IgG isotype control (AC042, 2 µg/mL, left) or CD300a Rabbit mAb (A25752, 2 µg/mL, right), followed by Alexa Fluor® 647 conjugated goat anti-rabbit pAb staining.