

CD146/MCAM Rabbit mAb

Catalog No.: A25753 **Recombinant**

Basic Information

Observed MW

120kDa

Calculated MW

72kDa

Category

Primary antibody

Applications

ELISA, WB, IF/ICC

Cross-Reactivity

Human

CloneNo number

ARC68503

Background

Involved in glomerular filtration and vascular wound healing. Acts upstream of or within angiogenesis. Located in external side of plasma membrane. Biomarker of chronic obstructive pulmonary disease and uveal melanoma.

Recommended Dilutions

WB	1:500 - 1:1000
IF/ICC	1:50 - 1:200

Immunogen Information

Gene ID

4162

Swiss Prot

P43121

Immunogen

Recombinant fusion protein containing a sequence corresponding to amino acids 24-559 of human CD146/MCAM (NP_006491.2).

Synonyms

CD146; MUC18; HEMCAM; METCAM; MeICAM

Contact

 | 400-999-6126

 | cn.market@abclonal.com.cn

 | www.abclonal.com.cn

Product Information

Source

Rabbit

Isotype

IgG

Purification

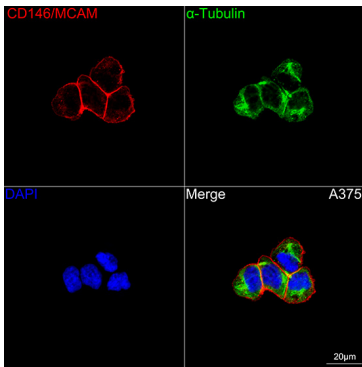
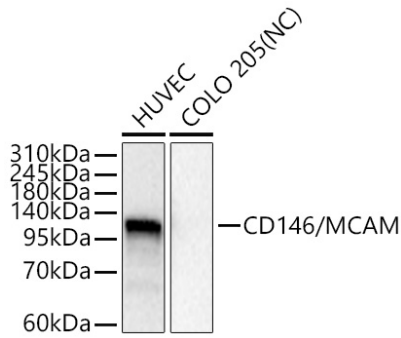
Affinity purification

Storage

Store at -20°C. Avoid freeze / thaw cycles.

Buffer: PBS with 0.05% proclin300, 0.05% BSA, 50% glycerol, pH7.3.

Validation Data



Confocal imaging of A375 cells using CD146/MCAM Rabbit mAb (A25753, dilution 1:200) followed by a further incubation with Cy3 Goat Anti-Rabbit IgG (H+L) (AS007, dilution 1:500) (Red). The cells were counterstained with α -Tubulin Mouse mAb (AC012, dilution 1:400) followed by incubation with ABflo® 488-conjugated Goat Anti-Mouse IgG (H+L) Ab (AS076, dilution 1:500) (Green). DAPI was used for nuclear staining (Blue). Objective: 100x.