

# CD304 Rabbit pAb

Catalog No.: A25754

## Basic Information

### Observed MW

125-140kDa

### Calculated MW

103kDa

### Category

Primary antibody

### Applications

ELISA,WB

### Cross-Reactivity

Mouse

## Background

Enables protein kinase binding activity; transmembrane signaling receptor activity; and vascular endothelial growth factor binding activity. Involved in several processes, including nervous system development; regulation of signal transduction; and vasculature development. Acts upstream of or within several processes, including morphogenesis of a branching epithelium; nervous system development; and toxin transport. Located in several cellular components, including endosome; focal adhesion; and neurofilament. Is integral component of postsynaptic membrane. Is expressed in several structures, including cardiovascular system; jaw; lung; nervous system; and sensory organ. Used to study retinal vein occlusion. Human ortholog(s) of this gene implicated in lung non-small cell carcinoma. Orthologous to human NRP1 (neuropilin 1).

## Recommended Dilutions

WB 1:500 - 1:1000

## Immunogen Information

### Gene ID

18186

### Swiss Prot

P97333

### Immunogen

Recombinant fusion protein containing a sequence corresponding to amino acids 22-856 of mouse CD304 (NP\_032763.2).

### Synonyms

Nrp; NP-1; Npn1; NPN-1; C530029I03

## Contact

☎ | 400-999-6126

✉ | [cn.market@abclonal.com.cn](mailto:cn.market@abclonal.com.cn)

🌐 | [www.abclonal.com.cn](http://www.abclonal.com.cn)

## Product Information

### Source

Rabbit

### Isotype

IgG

### Purification

Affinity purification

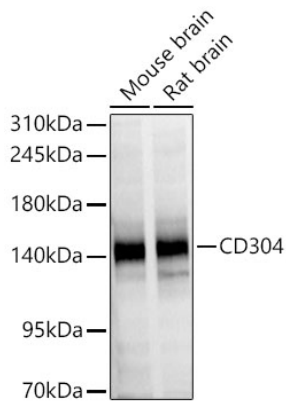
### Storage

Store at -20°C. Avoid freeze / thaw cycles.

Buffer: PBS with 0.05% proclin300,50% glycerol,pH7.3.

## Validation Data

---



Western blot analysis of various lysates using CD304 Rabbit pAb (A25754) at 1:1000 dilution incubated overnight at 4°C.  
Secondary antibody: HRP-conjugated Goat anti-Rabbit IgG (H+L)(AS014) at 1:10000 dilution.  
Lysates/proteins: 25 µg per lane.  
Blocking buffer: 3% nonfat dry milk in TBST.  
Detection: ECL Basic Kit (RM00020)  
Exposure time: 30 s.