

CD62L/L-Selectin Rabbit pAb

Catalog No.: A25759

Basic Information

Observed MW

Refer to figures

Calculated MW

42kDa

Category

Primary antibody

Applications

ELISA, IHC-P, IF/ICC

Cross-Reactivity

Human

Background

This gene encodes a cell surface adhesion molecule that belongs to a family of adhesion/homing receptors. The encoded protein contains a C-type lectin-like domain, a calcium-binding epidermal growth factor-like domain, and two short complement-like repeats. The gene product is required for binding and subsequent rolling of leucocytes on endothelial cells, facilitating their migration into secondary lymphoid organs and inflammation sites. Single-nucleotide polymorphisms in this gene have been associated with various diseases including immunoglobulin A nephropathy. Alternatively spliced transcript variants have been found for this gene.

Recommended Dilutions

IHC-P	1:500 - 1:1000
IF/ICC	1:100 - 1:500

Immunogen Information

Gene ID	Swiss Prot
6402	P14151

Immunogen

Recombinant fusion protein containing a sequence corresponding to amino acids 39-332 of human CD62L/L-Selectin (NP_000646.3).

Synonyms

TQ1; LAM1; LEU8; LNHR; LSEL; CD62L; LYAM1; PLNHR; LECAM1

Contact

☎	400-999-6126
✉	cn.market@abclonal.com.cn
🌐	www.abclonal.com.cn

Product Information

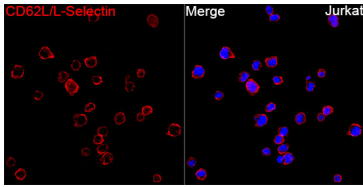
Source	Isotype	Purification
Rabbit	IgG	Affinity purification

Storage

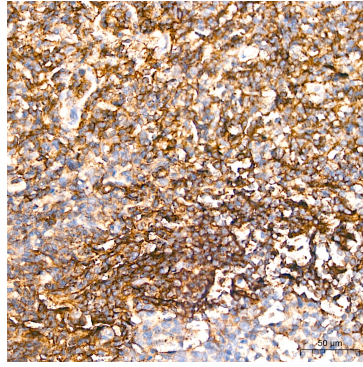
Store at -20°C. Avoid freeze / thaw cycles.

Buffer: PBS with 0.05% proclin300, 50% glycerol, pH7.3.

Validation Data



Immunofluorescence analysis of Jurkat cells using CD62L/Selectin Rabbit pAb (A25759) at a dilution of 1:400 (40x lens). Secondary antibody: Cy3-conjugated Goat anti-Rabbit IgG (H+L)(AS007) at 1:500 dilution. Blue: DAPI for nuclear staining.



Immunohistochemistry analysis of paraffin-embedded Human tonsil tissue using CD62L/Selectin Rabbit pAb (A25759) at a dilution of 1:1000 (40x lens). High pressure antigen retrieval performed with 0.01M Citrate Buffer(pH 6.0) prior to IHC staining.