

# Mouse anti-Human CD3 mAb

Catalog No.: A25761 **1 Publications**

## Basic Information

### Observed MW

Refer to figures

### Calculated MW

23kDa

### Category

Primary antibody

### Applications

FC, in vitro T cell stimulation/activation

### Cross-Reactivity

Human

### CloneNo number

AMC50002

## Background

The protein encoded by this gene is the CD3-epsilon polypeptide, which together with CD3-gamma, -delta and -zeta, and the T-cell receptor alpha/beta and gamma/delta heterodimers, forms the T-cell receptor-CD3 complex. This complex plays an important role in coupling antigen recognition to several intracellular signal-transduction pathways. The genes encoding the epsilon, gamma and delta polypeptides are located in the same cluster on chromosome 11. The epsilon polypeptide plays an essential role in T-cell development. Defects in this gene cause immunodeficiency. This gene has also been linked to a susceptibility to type I diabetes in women.

## Recommended Dilutions

**FC** Recommended starting concentration is 2 µg/mL. Please optimize the concentration based on your specific assay requirements

## Immunogen Information

### Gene ID

916

### Swiss Prot

P07766

### Immunogen

Recombinant protein (or fragment). This information is considered to be commercially sensitive.

### Synonyms

T3E; TCRE; IMD18; CD3epsilon; CD3E Antigen

## Contact

 | 400-999-6126

 | [cn.market@abclonal.com.cn](mailto:cn.market@abclonal.com.cn)

 | [www.abclonal.com.cn](http://www.abclonal.com.cn)

## Product Information

### Source

Mouse

### Isotype

mouse IgG2a

### Purification

Affinity purification

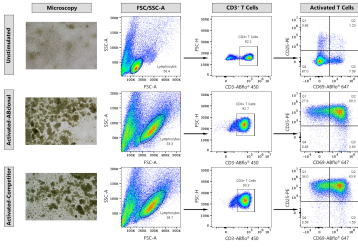
### Storage

Store at 2-8°C. Avoid freeze.

Buffer: 0.2 µm filtered in acetate-buffered solution, pH 5.5, containing no preservative.

Endotoxin Level: Less than 0.01 EU/µg of the protein (< 0.001 ng/µg of the protein) as determined by the LAL test.

## Validation Data



Flow cytometry: Human T cells in PBMC were activated using Mouse anti-Human CD3 mAb (A25761,2ug/ml) and Rabbit anti-Human CD28 mAb (A27700,2ug/ml), or competitor's CD3/CD28 antibody for 72 hours. The unstimulated control was performed without treatment. Cells were fluorescently stained with ABflo® 450 Rabbit anti-Human CD3 mAb (A27177,5 µL/Test), PE Rabbit anti-Human CD25 mAb (A26773,5 µL/Test), ABflo® 647 Rabbit anti-Human CD69 mAb (A25892,5 µL/Test). The degree of T cell activation are defined as CD25+CD69+ cells on CD3+ T cells gate.