

ABflo® 488 Rabbit anti-Mouse CD48 mAb

Catalog No.: A25766

Basic Information

Observed MW

Calculated MW
27kDa

Category
Primary antibody

Applications
FC

Cross-Reactivity
Mouse

CloneNo number
ARC67324-ABflo488

Conjugate
ABflo® 488. Ex:491nm. Em:516nm.

Background

Predicted to enable antigen binding activity and signaling receptor activity. Acts upstream of or within T cell activation and signal transduction. Located in external side of plasma membrane. Is expressed in left lung; liver; right lung; and thymus primordium. Orthologous to human CD48 (CD48 molecule).

Recommended Dilutions

FC 5 µl per 10⁶ cells in
100 µl volume

Immunogen Information

Gene ID	Swiss Prot
12506	P18181

Immunogen

Recombinant fusion protein containing a sequence corresponding to amino acids 23-216 of mouse CD48 (NP_031675.1).

Synonyms

BCM1; BLAST; Bcm-1; BLAST1; SLAMF2; Sgp-60; BLAST-1; MEM-102

Contact

☎ | 400-999-6126

✉ | cn.market@abclonal.com.cn

🌐 | www.abclonal.com.cn

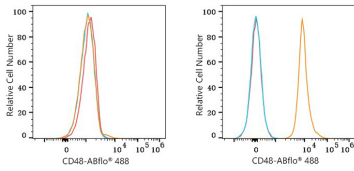
Product Information

Source	Isotype	Purification
Rabbit	IgG	Affinity purification

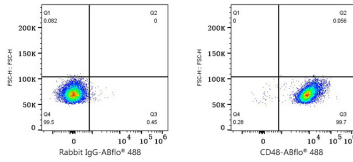
Storage

Store at 2-8°C. Avoid freeze.
Buffer: PBS with 0.03% proclin300,0.2% BSA,pH7.3.

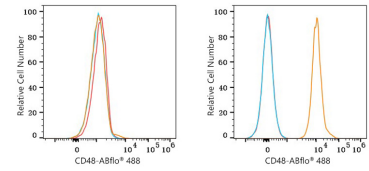
Validation Data



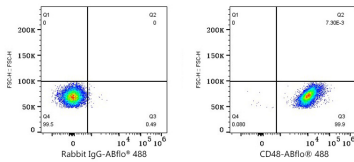
Flow cytometry: 1×10^6 NIH/3T3 cells (negative control, left) and C57BL/6 mouse splenocytes (right) were surface-stained with ABflo® 488 Rabbit anti-Mouse CD48 mAb (A25766, 5 μ l/Test, orange line) or ABflo® 488 Rabbit IgG isotype control (A22069, 5 μ l/Test, blue line). Non-fluorescently stained cells were used as blank control (red line).



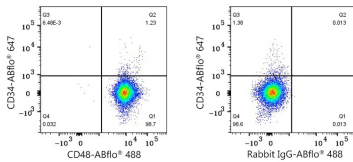
Flow cytometry: 1×10^6 C57BL/6 mouse splenocytes were surface-stained with ABflo® 488 Rabbit IgG isotype control (A22069, 5 μ l/Test, left) or ABflo® 488 Rabbit anti-Mouse CD48 mAb (A25766, 5 μ l/Test, right).



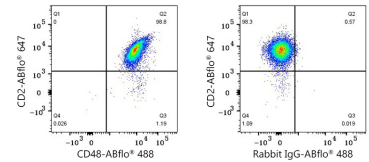
Flow cytometry: 1×10^6 NIH/3T3 cells (negative control, left) and Mouse PBMC (right) were surface-stained with ABflo® 488 Rabbit anti-Mouse CD48 mAb (A25766, 5 μ l/Test, orange line) or ABflo® 488 Rabbit IgG isotype control (A22069, 5 μ l/Test, blue line). Non-fluorescently stained cells were used as blank control (red line).



Flow cytometry: 1×10^6 Mouse PBMC were surface-stained with ABflo® 488 Rabbit IgG isotype control (A22069, 5 μ l/Test, left) or ABflo® 488 Rabbit anti-Mouse CD48 mAb (A25766, 5 μ l/Test, right).



Flow cytometry: 1×10^6 C57BL/6 mouse splenocytes were surface-stained with ABflo® 647 Rabbit anti-Mouse CD34 mAb (A23108, 5 μ l/Test) and ABflo® 488 Rabbit anti-Mouse CD48 mAb (A25766, 5 μ l/Test, left) or ABflo® 488 Rabbit IgG isotype control (A22069, 5 μ l/Test, right).



Flow cytometry: 1×10^6 C57BL/6 mouse splenocytes were surface-stained with ABflo® 647 Rabbit anti-Mouse CD2 mAb (A23705, 5 μ l/Test) and ABflo® 488 Rabbit anti-Mouse CD48 mAb (A25766, 5 μ l/Test, left) or ABflo® 488 Rabbit IgG isotype control (A22069, 5 μ l/Test, right).