

# ABflo® 594 Rabbit anti-Mouse CD48 mAb

Catalog No.: A25768

## Basic Information

### Observed MW

### Calculated MW

27kDa

### Category

Primary antibody

### Applications

FC

### Cross-Reactivity

Mouse

### CloneNo number

ARC67324-ABflo594

### Conjugate

ABflo® 594. Ex:588nm. Em:604nm.

## Background

Predicted to enable antigen binding activity and signaling receptor activity. Acts upstream of or within T cell activation and signal transduction. Located in external side of plasma membrane. Is expressed in left lung; liver; right lung; and thymus primordium. Orthologous to human CD48 (CD48 molecule).

## Recommended Dilutions

FC 5 µl per 10<sup>6</sup> cells in  
100 µl volume

## Immunogen Information

### Gene ID

12506

### Swiss Prot

P18181

### Immunogen

Recombinant fusion protein containing a sequence corresponding to amino acids 23-216 of mouse CD48 (NP\_031675.1).

### Synonyms

BCM1; BLAST; Bcm-1; BLAST1; SLAMF2; Sgp-60; BLAST-1; MEM-102

## Contact

☎ | 400-999-6126

✉ | [cn.market@abclonal.com.cn](mailto:cn.market@abclonal.com.cn)

🌐 | [www.abclonal.com.cn](http://www.abclonal.com.cn)

## Product Information

### Source

Rabbit

### Isotype

IgG

### Purification

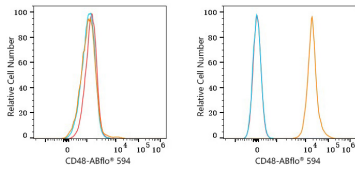
Affinity purification

### Storage

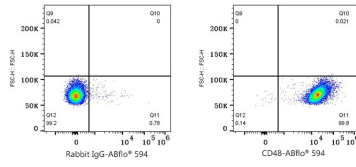
Store at 2-8°C. Avoid freeze.

Buffer: PBS with 0.03% proclin300,0.2% BSA,pH7.3.

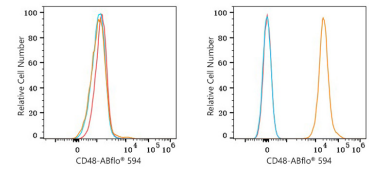
## Validation Data



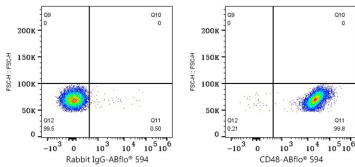
Flow cytometry:  $1 \times 10^6$  NIH/3T3 cells (negative control, left) and C57BL/6 mouse splenocytes (right) were surface-stained with ABflo® 594 Rabbit anti-Mouse CD48 mAb (A25768, 5  $\mu$ l/Test, orange line) or ABflo® 594 Rabbit IgG isotype control (A23821, 5  $\mu$ l/Test, blue line). Non-fluorescently stained cells were used as blank control (red line).



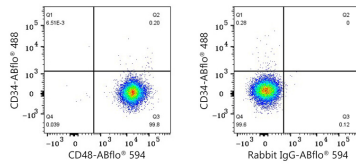
Flow cytometry:  $1 \times 10^6$  C57BL/6 mouse splenocytes were surface-stained with ABflo® 594 Rabbit IgG isotype control (A23821, 5  $\mu$ l/Test, left) or ABflo® 594 Rabbit anti-Mouse CD48 mAb (A25768, 5  $\mu$ l/Test, right).



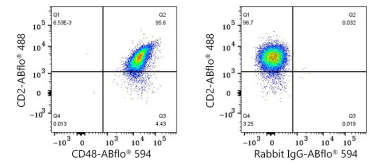
Flow cytometry:  $1 \times 10^6$  NIH/3T3 cells (negative control, left) and Mouse PBMC (right) were surface-stained with ABflo® 594 Rabbit anti-Mouse CD48 mAb (A25768, 5  $\mu$ l/Test, orange line) or ABflo® 594 Rabbit IgG isotype control (A23821, 5  $\mu$ l/Test, blue line). Non-fluorescently stained cells were used as blank control (red line).



Flow cytometry:  $1 \times 10^6$  Mouse PBMC were surface-stained with ABflo® 594 Rabbit IgG isotype control (A23821, 5  $\mu$ l/Test, left) or ABflo® 594 Rabbit anti-Mouse CD48 mAb (A25768, 5  $\mu$ l/Test, right).



Flow cytometry:  $1 \times 10^6$  C57BL/6 mouse splenocytes were surface-stained with ABflo® 488 Rabbit anti-Mouse CD34 mAb (A23107, 5  $\mu$ l/Test) and ABflo® 594 Rabbit anti-Mouse CD48 mAb (A25768, 5  $\mu$ l/Test, left) or ABflo® 594 Rabbit IgG isotype control (A23821, 5  $\mu$ l/Test, right).



Flow cytometry:  $1 \times 10^6$  C57BL/6 mouse splenocytes were surface-stained with ABflo® 488 Rabbit anti-Mouse CD2 mAb (A23704, 5  $\mu$ l/Test) and ABflo® 594 Rabbit anti-Mouse CD48 mAb (A25768, 5  $\mu$ l/Test, left) or ABflo® 594 Rabbit IgG isotype control (A23821, 5  $\mu$ l/Test, right).