

# CD300a Rabbit mAb

Catalog No.: A25787 **Recombinant**

## Basic Information

### Observed MW

Refer to figures

### Calculated MW

33kDa/20kDa/12kDa/16.5kDa

### Category

Primary antibody

### Applications

IF/ICC,FC,ELISA

### Cross-Reactivity

Human

### CloneNo number

ARC67455

## Background

This gene encodes a member of the CD300 glycoprotein family of cell surface proteins found on leukocytes involved in immune response signaling pathways. This gene is located on chromosome 17 in a cluster with all but one of the other family members. Multiple transcript variants encoding different isoforms have been found for this gene.

## Recommended Dilutions

**IF/ICC** 1:300 - 1:800

**FC** 1:500 - 1:1000

**ELISA** Recommended starting concentration is 1 µg/mL. Please optimize the concentration based on your specific assay requirements.

## Immunogen Information

### Gene ID

11314

### Swiss Prot

Q9UGN4

### Immunogen

Recombinant fusion protein containing a sequence corresponding to amino acids 18-178 of human CD300a (NP\_009192.2).

### Synonyms

IRC1; IRC2; CLM-8; IRp60; IGSF12; CMRF35H; CMRF-35H; CMRF35-H; CMRF35H9; CMRF35-H9; IRC1/IRC2; CMRF-35-H9

## Contact

☎ | 400-999-6126

✉ | [cn.market@abclonal.com.cn](mailto:cn.market@abclonal.com.cn)

🌐 | [www.abclonal.com.cn](http://www.abclonal.com.cn)

## Product Information

### Source

Rabbit

### Isotype

IgG

### Purification

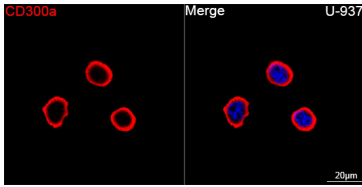
Affinity purification

### Storage

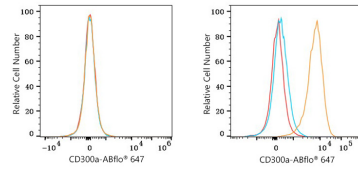
Store at -20°C. Avoid freeze / thaw cycles.

Buffer: PBS with 0.05% proclin300,0.05% BSA,50% glycerol,pH7.3.

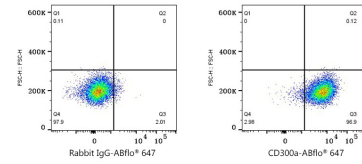
## Validation Data



Confocal imaging of U-937 cells using CD300a Rabbit mAb (A25787, dilution 1:300) followed by a further incubation with Cy3 Goat Anti-Rabbit IgG (H+L) (AS007, dilution 1:500) (Red). DAPI was used for nuclear staining (Blue). Objective: 100x.



Flow cytometry:  $1 \times 10^6$  Jurkat cells (negative control, left) and RPMI 8226 cells (right) were surface-stained with CD300a Rabbit mAb (A25787, 2 µg/mL, orange line) or Rabbit IgG isotype control (AC042, 2 µg/mL, blue line), followed by Alexa Fluor® 647 conjugated goat anti-rabbit pAb staining. Non-fluorescently stained cells were used as blank control (red line).



Flow cytometry:  $1 \times 10^6$  RPMI 8226 cells were surface-stained with Rabbit IgG isotype control (AC042, 2 µg/mL, left) or CD300a Rabbit mAb (A25787, 2 µg/mL, right), followed by Alexa Fluor® 647 conjugated goat anti-rabbit pAb staining.