

# TPI1 Rabbit pAb

Catalog No.: A2579 **3 Publications**

## Basic Information

### Observed MW

27kDa

### Calculated MW

27kDa

### Category

Primary antibody

### Applications

ELISA, WB, IF/ICC

### Cross-Reactivity

Human, Mouse, Rat

## Background

This gene encodes an enzyme, consisting of two identical proteins, which catalyzes the isomerization of glyceraldehydes 3-phosphate (G3P) and dihydroxy-acetone phosphate (DHAP) in glycolysis and gluconeogenesis. Mutations in this gene are associated with triosephosphate isomerase deficiency. Pseudogenes have been identified on chromosomes 1, 4, 6 and 7. Alternative splicing results in multiple transcript variants.

## Recommended Dilutions

<b>WB</b>	1:500 - 1:1000
<b>IF/ICC</b>	1:50 - 1:200

## Immunogen Information

### Gene ID

7167

### Swiss Prot

P60174

### Immunogen

Recombinant fusion protein containing a sequence corresponding to amino acids 1-249 of human TPI1 (NP\_000356.1).

### Synonyms

TIM; TPI; TPID; HEL-S-49; TPI1

## Contact

	400-999-6126
	cn.market@abclonal.com.cn
	<a href="http://www.abclonal.com.cn">www.abclonal.com.cn</a>

## Product Information

### Source

Rabbit

### Isotype

IgG

### Purification

Affinity purification

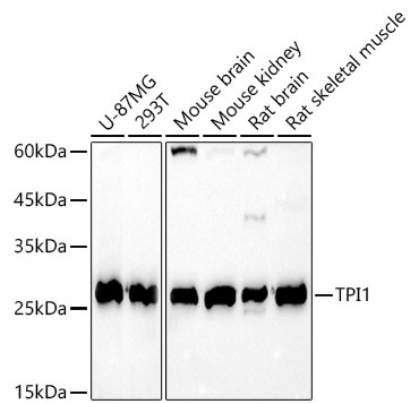
### Storage

Store at -20°C. Avoid freeze / thaw cycles.

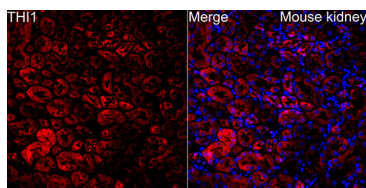
Buffer: PBS with 0.05% proclin300, 50% glycerol, pH7.3.

## Validation Data

---



Western blot analysis of various lysates using TPI1 Rabbit pAb (A2579) at 1:1000 dilution. Secondary antibody: HRP Goat Anti-Rabbit IgG (H+L) (AS014) at 1:10000 dilution. Lysates/proteins: 25µg per lane. Blocking buffer: 3% nonfat dry milk in TBST. Detection: ECL Basic Kit (RM00020). Exposure time: 10s.



Immunofluorescence analysis of paraffin-embedded Mouse kidney using TPI1 Rabbit pAb(A2579) at a dilution of 1:100 (40x lens). Secondary antibody: Cy3 Goat Anti-Rabbit IgG (H+L)(AS007) at 1:500 dilution. Blue: DAPI for nuclear staining.