

HLA-DPB1 Rabbit mAb

Catalog No.: A25794 **Recombinant**

Basic Information

Observed MW

25-35kDa

Calculated MW

29kDa

Category

Primary antibody

Applications

ELISA, WB, IHC-P, IF/ICC

Cross-Reactivity

Human, Mouse, Rat

CloneNo number

ARC66414

Background

HLA-DPB belongs to the HLA class II beta chain paralogues. This class II molecule is a heterodimer consisting of an alpha (DPA) and a beta chain (DPB), both anchored in the membrane. It plays a central role in the immune system by presenting peptides derived from extracellular proteins. Class II molecules are expressed in antigen presenting cells (APC: B lymphocytes, dendritic cells, macrophages). The beta chain is approximately 26-28 kDa and its gene contains 6 exons. Exon one encodes the leader peptide, exons 2 and 3 encode the two extracellular domains, exon 4 encodes the transmembrane domain and exon 5 encodes the cytoplasmic tail. Within the DP molecule both the alpha chain and the beta chain contain the polymorphisms specifying the peptide binding specificities, resulting in up to 4 different molecules.

Recommended Dilutions

WB	1:500 - 1:1000
IHC-P	1:1000 - 1:5000
IF/ICC	1:50 - 1:200

Immunogen Information

Gene ID

3115

Swiss Prot

P04440

Immunogen

A synthetic peptide corresponding to a sequence within amino acids 1-100 of human HLA-DPB1 (NP_002112.3).

Synonyms

DPB1; HLA-DP; HLA-DPB; HLA-DP1B

Contact

	400-999-6126
	cn.market@abclonal.com.cn
	www.abclonal.com.cn

Product Information

Source

Rabbit

Isotype

IgG

Purification

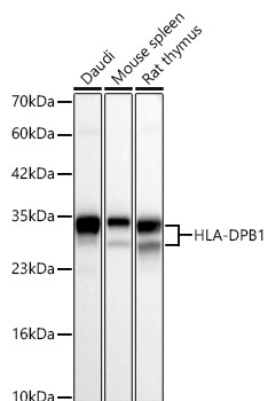
Affinity purification

Storage

Store at -20°C. Avoid freeze / thaw cycles.

Buffer: PBS with 0.05% proclin300, 0.05% BSA, 50% glycerol, pH7.3.

Validation Data



Western blot analysis of various lysates using HLA-DPB1 Rabbit mAb (A25794) at 1:1000 dilution incubated overnight at 4°C.

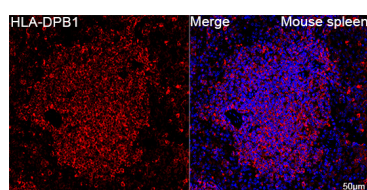
Secondary antibody: HRP-conjugated Goat anti-Rabbit IgG (H+L) (AS014) at 1:10000 dilution.

Lysates/proteins: 25 µg per lane.

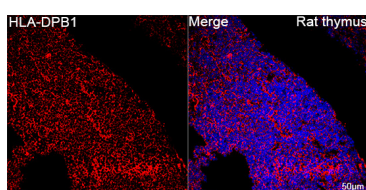
Blocking buffer: 3% nonfat dry milk in TBST.

Detection: ECL Basic Kit (RM00020)

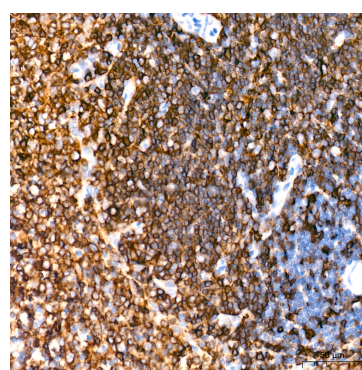
Exposure time: 10 s.



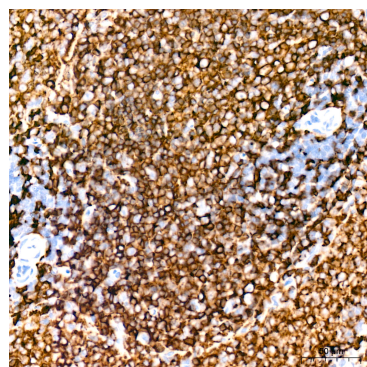
Confocal imaging of paraffin-embedded Mouse spleen tissue using HLA-DPB1 Rabbit mAb (A25794, dilution 1:200) followed by a further incubation with Cy3 Goat Anti-Rabbit IgG (H+L) (AS007, dilution 1:500) (Red). DAPI was used for nuclear staining (Blue). High pressure antigen retrieval performed with 0.01M Citrate Buffer(pH 6.0) prior to IF staining. Objective: 40x.



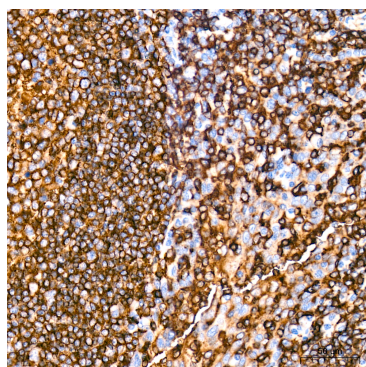
Confocal imaging of paraffin-embedded Rat thymus tissue using HLA-DPB1 Rabbit mAb (A25794, dilution 1:200) followed by a further incubation with Cy3 Goat Anti-Rabbit IgG (H+L) (AS007, dilution 1:500) (Red). DAPI was used for nuclear staining (Blue). High pressure antigen retrieval performed with 0.01M Citrate Buffer(pH 6.0) prior to IF staining. Objective: 40x.



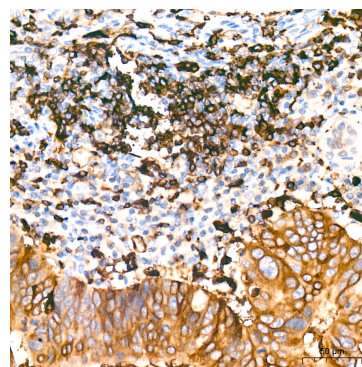
Immunohistochemistry analysis of HLA-DPB1 in paraffin-embedded Rat spleen tissue using HLA-DPB1 Rabbit mAb (A25794) at a dilution of 1:2000 (40x lens). High pressure antigen retrieval performed with 0.01M Citrate Buffer(pH 6.0) prior to IHC staining.



Immunohistochemistry analysis of HLA-DPB1 in paraffin-embedded Mouse spleen tissue using HLA-DPB1 Rabbit mAb (A25794) at a dilution of 1:2000 (40x lens). High pressure antigen retrieval performed with 0.01M Citrate Buffer(pH 6.0) prior to IHC staining.



Immunohistochemistry analysis of HLA-DPB1 in paraffin-embedded Human tonsil tissue using HLA-DPB1 Rabbit mAb (A25794) at a dilution of 1:2000 (40x lens). High pressure antigen retrieval performed with 0.01M Citrate Buffer(pH 6.0) prior to IHC staining.



Immunohistochemistry analysis of HLA-DPB1 in paraffin-embedded Human colon carcinoma tissue using HLA-DPB1 Rabbit mAb (A25794) at a dilution of 1:2000 (40x lens). High pressure antigen retrieval performed with 0.01M Citrate Buffer(pH 6.0) prior to IHC staining.