

BCL2 Rabbit mAb

Catalog No.: A25812 **Recombinant**

Basic Information

Observed MW

26kDa

Calculated MW

26kDa

Category

Primary antibody

Applications

ELISA, WB, IHC-P

Cross-Reactivity

Mouse, Rat

CloneNo number

ARC67750

Background

Enables BH domain binding activity. Involved in several processes, including response to peptide; response to purine-containing compound; and response to vitamin. Located in cytosol; mitochondrial crista; and perinuclear region of cytoplasm. Used to study several diseases, including brain ischemia (multiple); end stage renal disease; gastric ulcer; intestinal disease (multiple); and status epilepticus. Biomarker of several diseases, including abdominal obesity-metabolic syndrome 1; brain disease (multiple); hypertension (multiple); intrinsic cardiomyopathy (multiple); and neurodegenerative disease (multiple). Human ortholog(s) of this gene implicated in several diseases, including carcinoma (multiple); hematologic cancer (multiple); intracranial aneurysm; prostate cancer; and urinary bladder cancer. Orthologous to human BCL2 (BCL2 apoptosis regulator).

Recommended Dilutions

WB 1:500 - 1:1000**IHC-P** 1:100 - 1:500

Immunogen Information

Gene ID

24224

Swiss Prot

P49950

Immunogen

A synthetic peptide corresponding to a sequence within amino acids 1-100 of rat Bcl2 (NP_058689.2).

Synonyms

Bcl-2

Contact

 | 400-999-6126 | cn.market@abclonal.com.cn | www.abclonal.com.cn

Product Information

Source

Rabbit

Isotype

IgG

Purification

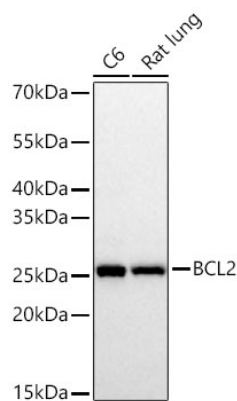
Affinity purification

Storage

Store at -20°C. Avoid freeze / thaw cycles.

Buffer: PBS with 0.05% proclin300, 0.05% BSA, 50% glycerol, pH7.3.

Validation Data



Western blot analysis of various lysates using BCL2 Rabbit mAb (A25812) at 1:1000 dilution incubated overnight at 4°C.

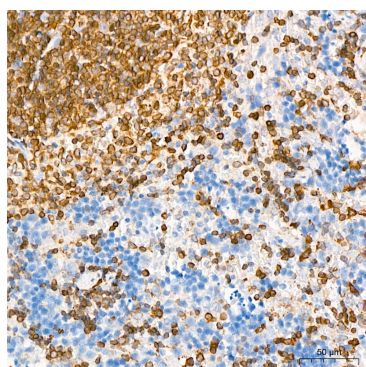
Secondary antibody: HRP-conjugated Goat anti-Rabbit IgG (H+L) (AS014) at 1:10000 dilution.

Lysates/proteins: 25 µg per lane.

Blocking buffer: 3% nonfat dry milk in TBST.

Detection: ECL Basic Kit (RM00020).

Exposure time: 30s.



Immunohistochemistry analysis of paraffin-embedded mouse spleen tissue using BCL2 Rabbit mAb (A25812) at a dilution of 1:300 (40x lens). High pressure antigen retrieval performed with 0.01M Citrate Buffer (pH 6.0) prior to IHC staining.