

IFN-beta Rabbit mAb

Catalog No.: A25818 **Recombinant**

Basic Information

Observed MW

24kDa/26kDa

Calculated MW

22kDa

Category

Primary antibody

Applications

ELISA, WB

Cross-Reactivity

Mouse

CloneNo number

ARC68043

Background

Enables cytokine activity and type I interferon receptor binding activity. Involved in B cell proliferation; cellular response to virus; and type I interferon signaling pathway. Acts upstream of or within several processes, including cellular response to organic cyclic compound; defense response to other organism; and negative regulation of osteoclast differentiation. Located in extracellular space. Is expressed in embryo and liver. Human ortholog(s) of this gene implicated in COVID-19. Orthologous to human IFNB1 (interferon beta 1).

Recommended Dilutions

WB 1:500 - 1:1000

Immunogen Information

Gene ID

15977

Swiss Prot

P01575

Immunogen

Recombinant fusion protein containing a sequence corresponding to amino acids 1-182 of mouse IFN-beta (NP_034640.1)

Synonyms

Ifb; IFNB; If1da1; IFN-beta

Contact

☎ | 400-999-6126

✉ | cn.market@abclonal.com.cn

🌐 | www.abclonal.com.cn

Product Information

Source

Rabbit

Isotype

IgG

Purification

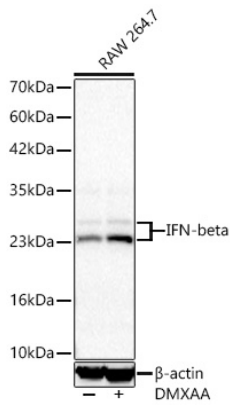
Affinity purification

Storage

Store at -20°C. Avoid freeze / thaw cycles.

Buffer: PBS with 0.05% proclin300, 0.05% BSA, 50% glycerol, pH7.3.

Validation Data



Western blot analysis of lysates from RAW 264.7 cells using IFN-beta Rabbit mAb (A25818) at 1:1000 dilution incubated overnight at 4°C. Raw264.7 cells were treated by DMXAA(50 ug/mL) for 7 hours after serum-starvation overnight.
Secondary antibody: HRP-conjugated Goat anti-Rabbit IgG (H+L) (AS014) at 1:10000 dilution.
Lysates/proteins: 30 µg per lane.
Blocking buffer: 3% nonfat dry milk in TBST.
Detection: ECL Basic Kit (RM00020).
Exposure time: 20s.