

# CD34 Rabbit mAb

Catalog No.: A25821 **Recombinant**

## Basic Information

### Observed MW

Refer to figures

### Calculated MW

35kDa/41kDa

### Category

Primary antibody

### Applications

IHC-P,IF/ICC,FC,ELISA

### Cross-Reactivity

Human

### CloneNo number

ARC67795

## Background

The protein encoded by this gene may play a role in the attachment of stem cells to the bone marrow extracellular matrix or to stromal cells. This single-pass membrane protein is highly glycosylated and phosphorylated by protein kinase C. Two transcript variants encoding different isoforms have been found for this gene.

## Recommended Dilutions

**IHC-P** 1:200 - 1:800

**IF/ICC** 1:200 - 1:800

**FC** 1:1000 - 1:5000

**ELISA** Recommended starting concentration is 1 µg/mL. Please optimize the concentration based on your specific assay requirements.

## Immunogen Information

### Gene ID

947

### Swiss Prot

P28906

### Immunogen

Recombinant fusion protein containing a sequence corresponding to amino acids 170-290 of human CD34 (NP\_001020280.1).

### Synonyms

CD34;CD34 molecule;GIG3;MORT1

## Contact

☎ | 400-999-6126

✉ | [cn.market@abclonal.com.cn](mailto:cn.market@abclonal.com.cn)

🌐 | [www.abclonal.com.cn](http://www.abclonal.com.cn)

## Product Information

### Source

Rabbit

### Isotype

IgG

### Purification

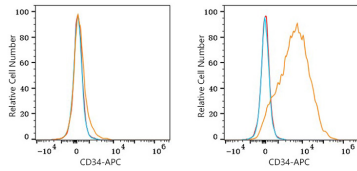
Affinity purification

### Storage

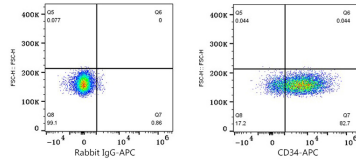
Store at -20°C. Avoid freeze / thaw cycles.

Buffer: PBS with 0.05% proclin300,0.05% BSA,50% glycerol,pH7.3.

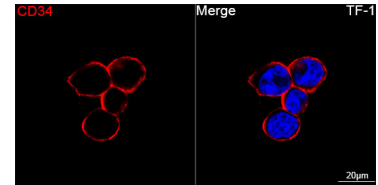
## Validation Data



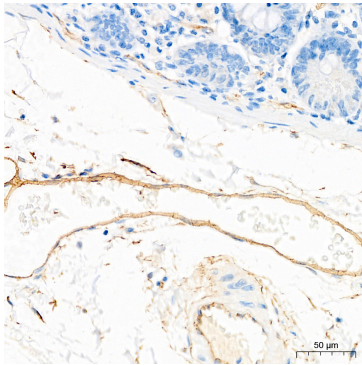
Flow cytometry: 1X10<sup>6</sup> HeLa cells (negative control, left) and MOLT-4 cells (right) were surface-stained with CD34 Rabbit mAb (A25821, 2 µg/mL, orange line) or Rabbit IgG isotype control (AC042, 2 µg/mL, blue line), followed by APC conjugated goat anti-rabbit pAb staining. Non-fluorescently stained cells were used as blank control (red line).



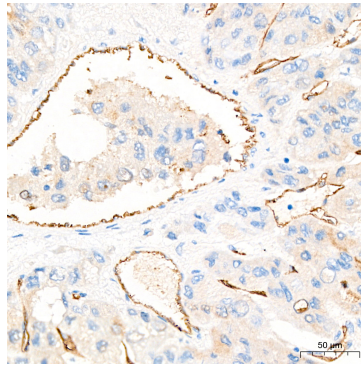
Flow cytometry: 1X10<sup>6</sup> MOLT-4 cells were surface-stained with Rabbit IgG isotype control (AC042, 2 µg/mL, left) or CD34 Rabbit mAb (A25821, 2 µg/mL, right), followed by APC conjugated goat anti-rabbit pAb staining.



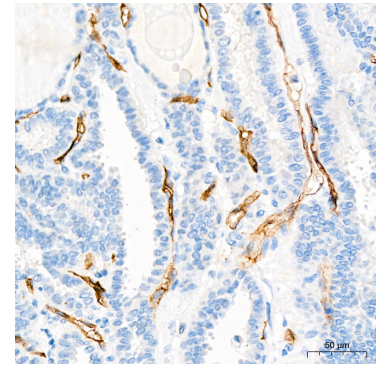
Confocal imaging of TF-1 cells using CD34 Rabbit mAb (A25821, dilution 1:200) followed by a further incubation with Cy3 Goat Anti-Rabbit IgG (H+L) (AS007, dilution 1:500) (Red). DAPI was used for nuclear staining (Blue). Objective: 100x.



Immunohistochemistry analysis of paraffin-embedded Human colon tissue using CD34 Rabbit mAb (A25821) at a dilution of 1:300 (40x lens). High pressure antigen retrieval performed with 0.01M Tris-EDTA Buffer (pH 9.0) prior to IHC staining.



Immunohistochemistry analysis of paraffin-embedded Human liver tissue using CD34 Rabbit mAb (A25821) at a dilution of 1:300 (40x lens). High pressure antigen retrieval performed with 0.01M Tris-EDTA Buffer (pH 9.0) prior to IHC staining.



Immunohistochemistry analysis of paraffin-embedded Human thyroid tissue using CD34 Rabbit mAb (A25821) at a dilution of 1:300 (40x lens). High pressure antigen retrieval performed with 0.01M Tris-EDTA Buffer (pH 9.0) prior to IHC staining.