

VCAM-1/CD106 Rabbit mAb

Catalog No.: A25822 **Recombinant**

Basic Information

Observed MW

100kDa

Calculated MW

38kDa/81kDa

Category

Primary antibody

Applications

ELISA,WB,FC

Cross-Reactivity

Mouse, Rat

CloneNo number

ARC65686

Background

Predicted to enable integrin binding activity and primary amine oxidase activity. Acts upstream of or within several processes, including cellular response to glucose stimulus; chorio-allantoic fusion; and heterophilic cell-cell adhesion via plasma membrane cell adhesion molecules. Located in apical plasma membrane. Is expressed in several structures, including brain; embryo mesenchyme; extraembryonic component; heart; and hemolymphoid system. Human ortholog(s) of this gene implicated in hypertension. Orthologous to human VCAM1 (vascular cell adhesion molecule 1).

Recommended Dilutions

WB	1:500 - 1:1000
FC	1:500 - 1:1000

Immunogen Information

Gene ID

22329

Swiss Prot

P29533

Immunogen

Recombinant fusion protein containing a sequence corresponding to amino acids 25-310 of mouse VCAM-1/CD106 (NP_035823.3).

Synonyms

CD106; Vcam-1

Contact

☎ | 400-999-6126

✉ | cn.market@abclonal.com.cn

🌐 | www.abclonal.com.cn

Product Information

Source

Rabbit

Isotype

IgG

Purification

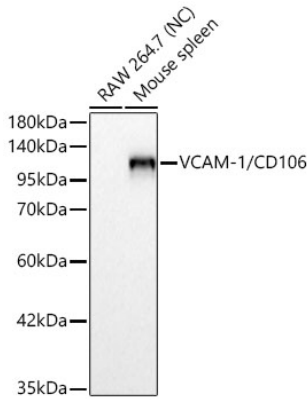
Affinity purification

Storage

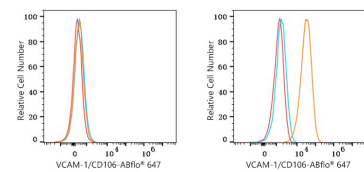
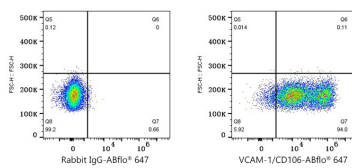
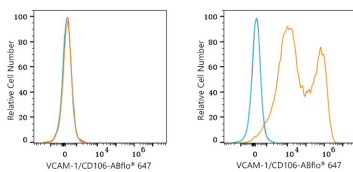
Store at -20°C. Avoid freeze / thaw cycles.

Buffer: PBS with 0.05% proclin300,0.05% BSA,50% glycerol,pH7.3.

Validation Data



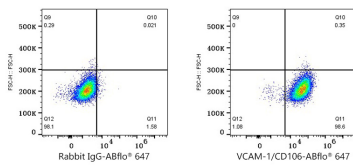
Western blot analysis of various lysates using VCAM-1/CD106 Rabbit mAb (A25822) at 1:1000 dilution incubated overnight at 4°C.
 Secondary antibody: HRP-conjugated Goat anti-Rabbit IgG (H+L) (AS014) at 1:10000 dilution.
 Lysates/proteins: 25 µg per lane.
 Blocking buffer: 3% nonfat dry milk in TBST.
 Detection: ECL Basic Kit (RM00020).
 Negative control (NC): RAW 264.7
 Exposure time: 60s.



Flow cytometry: 1×10^6 293T cells (negative control, left) and 293T (Transfection, right) cells were surface-stained with VCAM-1/CD106 Rabbit mAb (A25822, 2 µg/mL, orange line) or Rabbit IgG isotype control (AC042, 2 µg/mL, blue line), followed by Alexa Fluor® 647 conjugated goat anti-rabbit pAb staining. Non-fluorescently stained cells were used as blank control (red line).

Flow cytometry: 1×10^6 293T (Transfection) cells were surface-stained with Rabbit IgG isotype control (AC042, 2 µg/mL, left) or VCAM-1/CD106 Rabbit mAb (A25822, 2 µg/mL, right), followed by Alexa Fluor® 647 conjugated goat anti-rabbit pAb staining.

Flow cytometry: 1×10^6 RAW 264.7 cells (negative control, left) and MS1 cells (right) were surface-stained with VCAM-1/CD106 Rabbit mAb (A25822, 2 µg/mL, orange line) or Rabbit IgG isotype control (AC042, 2 µg/mL, blue line), followed by Alexa Fluor® 647 conjugated goat anti-rabbit pAb staining. Non-fluorescently stained cells were used as blank control (red line).



Flow cytometry: 1×10^6 MS1 cells were surface-stained with Rabbit IgG isotype control (AC042, 2 µg/mL, left) or VCAM-1/CD106 Rabbit mAb (A25822, 2 µg/mL, right), followed by Alexa Fluor® 647 conjugated goat anti-rabbit pAb staining.