

ABflo® 488 Rabbit anti-Mouse CD11a mAb

Catalog No.: A25827

Basic Information

Observed MW

Calculated MW
128kDa

Category
Primary antibody

Applications
FC

Cross-Reactivity
Mouse

CloneNo number
ARC67614

Conjugate
ABflo® 488. Ex:491nm. Em:516nm.

Recommended Dilutions

FC 5 µl per 10⁶ cells in
100 µl volume

Background

Predicted to enable ICAM-3 receptor activity and cell adhesion molecule binding activity. Involved in cell-cell adhesion. Acts upstream of or within several processes, including activated T cell proliferation; positive regulation of T cell proliferation; and positive regulation of calcium-mediated signaling. Located in cell-cell junction; external side of plasma membrane; and immunological synapse. Is expressed in heart; hemolymphoid system; and vault of skull. Orthologous to human ITGAL (integrin subunit alpha L).

Immunogen Information

Gene ID	Swiss Prot
16408	P24063

Immunogen

Recombinant protein (or fragment). This information is considered to be commercially sensitive.

Synonyms

Cd11a; LFA-1; Ly-15; Ly-21; (p180); LFA-1A

Contact

 | 400-999-6126

 | cn.market@abclonal.com.cn

 | www.abclonal.com.cn

Product Information

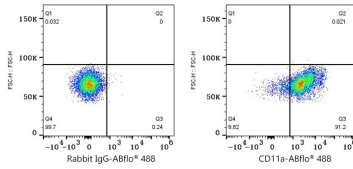
Source	Isotype	Purification
Rabbit	IgG	Affinity purification

Storage

Store at 2-8°C. Avoid freeze.

Buffer: PBS containing 0.2% BSA, preserved with proclin300 or sodium azide (as specified on the Certificate of Analysis), pH 7.3.

Validation Data



Flow cytometry: 1×10^6 C57BL/6 mouse splenocytes were surface-stained with ABflo® 488 Rabbit IgG isotype control (A22069,5 μ l/Test,left) or ABflo® 488 Rabbit anti-Mouse CD11a mAb (A25827,5 μ l/Test,right).