

# ABflo® 647 Rabbit anti-Mouse CD11a mAb

Catalog No.: A25828

## Basic Information

### Observed MW

### Calculated MW

128kDa

### Category

Primary antibody

### Applications

FC

### Cross-Reactivity

Mouse

### CloneNo number

ARC67614

### Conjugate

ABflo® 647. Ex:648nm. Em:664nm.

## Recommended Dilutions

FC 5 µl per 10<sup>6</sup> cells in  
100 µl volume

## Background

Predicted to enable ICAM-3 receptor activity and cell adhesion molecule binding activity. Involved in cell-cell adhesion. Acts upstream of or within several processes, including activated T cell proliferation; positive regulation of T cell proliferation; and positive regulation of calcium-mediated signaling. Located in cell-cell junction; external side of plasma membrane; and immunological synapse. Is expressed in heart; hemolymphoid system; and vault of skull. Orthologous to human ITGAL (integrin subunit alpha L).

## Immunogen Information

### Gene ID

16408

### Swiss Prot

P24063

### Immunogen

Recombinant protein (or fragment). This information is considered to be commercially sensitive.

### Synonyms

Cd11a; LFA-1; Ly-15; Ly-21; (p180); LFA-1A

## Contact

 | 400-999-6126

 | [cn.market@abclonal.com.cn](mailto:cn.market@abclonal.com.cn)

 | [www.abclonal.com.cn](http://www.abclonal.com.cn)

## Product Information

### Source

Rabbit

### Isotype

IgG

### Purification

Affinity purification

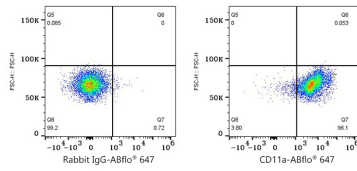
### Storage

Store at 2-8°C. Avoid freeze.

Buffer: PBS containing 0.2% BSA, preserved with proclin300 or sodium azide (as specified on the Certificate of Analysis), pH 7.3.

## Validation Data

---



Flow cytometry:  $1 \times 10^6$  C57BL/6 mouse splenocytes were surface-stained with ABflo® 647 Rabbit IgG isotype control (A22070, 5 µl/Test, left) or ABflo® 647 Rabbit anti-Mouse CD11a mAb (A25828, 5 µl/Test, right).