

Claudin 5 Rabbit mAb

Catalog No.: A25830 **Recombinant**

Basic Information

Observed MW

20kDa

Calculated MW

23kDa

Category

Primary antibody

Applications

ELISA, WB, IHC-P, IP

Cross-Reactivity

Human, Mouse, Rat

CloneNo number

ARC65207

Background

This gene encodes a member of the claudin family. Claudins are integral membrane proteins and components of tight junction strands. Tight junction strands serve as a physical barrier to prevent solutes and water from passing freely through the paracellular space between epithelial or endothelial cell sheets. Mutations in this gene have been found in patients with velocardiofacial syndrome. Alternative splicing results in multiple transcript variants encoding distinct isoforms.

Recommended Dilutions

WB 1:500 - 1:1000

IHC-P 1:100 - 1:500

IP 0.5µg-4µg antibody for
400µg-800µg extracts of
whole cells

Immunogen Information

Gene ID

7122

Swiss Prot

O00501

Immunogen

A synthetic peptide corresponding to a sequence within amino acids 119-218 of human Claudin 5 (NP_001349995.1).

Synonyms

AWAL; BEC1; TMVCF; TMDVCF; CPETRL1

Contact

☎ | 400-999-6126

✉ | cn.market@abclonal.com.cn

🌐 | www.abclonal.com.cn

Product Information

Source

Rabbit

Isotype

IgG

Purification

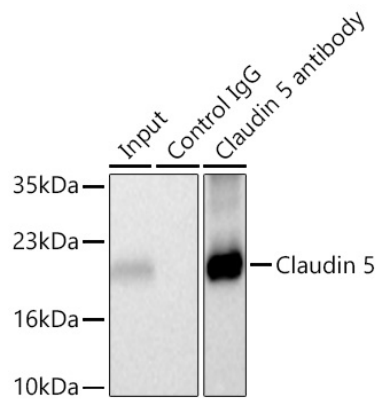
Affinity purification

Storage

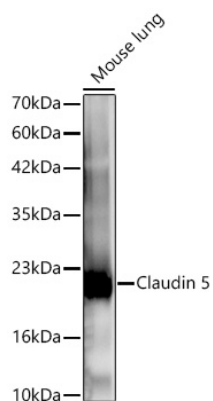
Store at -20°C. Avoid freeze / thaw cycles.

Buffer: PBS with 0.05% proclin300, 0.05% BSA, 50% glycerol, pH7.3.

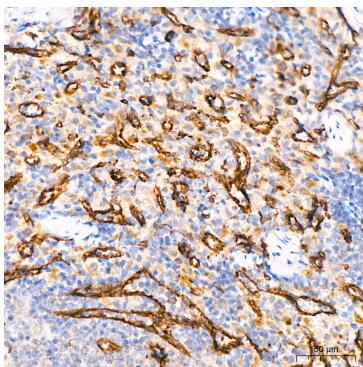
Validation Data



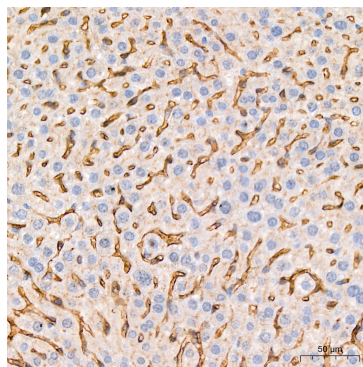
Immunoprecipitation of Claudin 5 from 600 μ g extracts of Mouse lung tissue was performed using 3 μ g of Claudin 5 Rabbit mAb (A25830). Rabbit IgG isotype control (AC042) was used to precipitate the Control IgG sample. IP samples were eluted with 1X Laemmli Buffer. The Input lane represents 10% of the total input. Western blot analysis of immunoprecipitates was conducted using Claudin 5 Rabbit mAb (A25830) at a dilution of 1:1000.



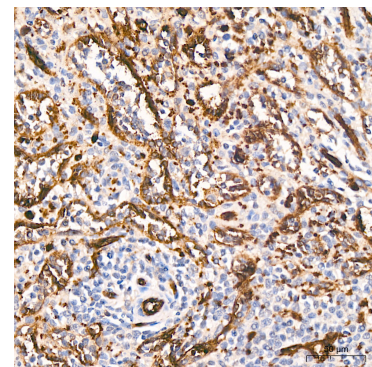
Western blot analysis of lysates from Mouse lung using Claudin 5 Rabbit mAb (A25830) at 1:1000 dilution incubated overnight at 4°C. Secondary antibody: HRP-conjugated Goat anti-Rabbit IgG (H+L) (AS014) at 1:10000 dilution. Lysates/proteins: 25 μ g per lane. Blocking buffer: 3% nonfat dry milk in TBST. Detection: ECL Basic Kit (RM00020). Exposure time: 10s.



Immunohistochemistry analysis of paraffin-embedded Rat spleen tissue using Claudin 5 Rabbit mAb (A25830) at a dilution of 1:200 (40x lens). High pressure antigen retrieval performed with 0.01M Citrate Buffer (pH 6.0) prior to IHC staining.



Immunohistochemistry analysis of paraffin-embedded Mouse liver tissue using Claudin 5 Rabbit mAb (A25830) at a dilution of 1:200 (40x lens). High pressure antigen retrieval performed with 0.01M Citrate Buffer (pH 6.0) prior to IHC staining.



Immunohistochemistry analysis of paraffin-embedded Human spleen tissue using Claudin 5 Rabbit mAb (A25830) at a dilution of 1:200 (40x lens). High pressure antigen retrieval performed with 0.01M Citrate Buffer (pH 6.0) prior to IHC staining.