

# ABflo® 488 Rabbit anti-Rat ICAM-1/CD54 mAb

Catalog No.: A25834

## Basic Information

### Observed MW

### Calculated MW

60kDa

### Category

Primary antibody

### Applications

FC

### Cross-Reactivity

Rat

### CloneNo number

ARC66078-ABflo488

### Conjugate

ABflo® 488. Ex:491nm. Em:516nm.

## Recommended Dilutions

FC 5 µl per 10<sup>6</sup> cells in  
100 µl volume

## Background

Enables integrin binding activity. Involved in several processes, including cellular response to cytokine stimulus; cellular response to lipid; and gonad development. Located in cell surface; extracellular space; and plasma membrane. Used to study diabetic angiopathy; mesenteric vascular occlusion; nephritis; pre-eclampsia; and uveitis. Biomarker of several diseases, including cerebrovascular disease (multiple); colitis (multiple); kidney failure (multiple); lung disease (multiple); and pancreatitis (multiple). Human ortholog(s) of this gene implicated in several diseases, including autoimmune disease (multiple); biliary atresia; diabetic retinopathy; inflammatory bowel disease (multiple); and liver cirrhosis. Orthologous to human ICAM1 (intercellular adhesion molecule 1).

## Immunogen Information

### Gene ID

25464

### Swiss Prot

Q00238

### Immunogen

Recombinant fusion protein containing a sequence corresponding to amino acids 28-493 of rat ICAM-1/CD54 (NP\_037099.1).

### Synonyms

CD54; ICAM; Icam1

## Contact

☎ | 400-999-6126

✉ | [cn.market@abclonal.com.cn](mailto:cn.market@abclonal.com.cn)

🌐 | [www.abclonal.com.cn](http://www.abclonal.com.cn)

## Product Information

### Source

Rabbit

### Isotype

IgG

### Purification

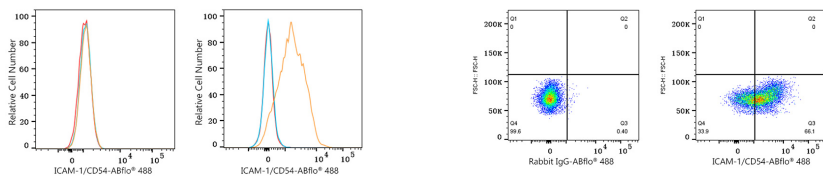
Affinity purification

### Storage

Store at 2-8°C. Avoid freeze.

Buffer: PBS with 0.03% proclin300,0.2% BSA,pH7.3.

## Validation Data



Flow cytometry:  $1 \times 10^6$  293T cells (negative control, left) and Rat splenocytes (right) were surface-stained with ABflo® 488 Rabbit anti-Rat ICAM-1/CD54 mAb (A25834, 5  $\mu$ l/Test, orange line) or ABflo® 488 Rabbit IgG isotype control (A22069, 5  $\mu$ l/Test, blue line). Non-fluorescently stained cells were used as blank control (red line).

Flow cytometry:  $1 \times 10^6$  Rat splenocytes were surface-stained with ABflo® 488 Rabbit IgG isotype control (A22069, 5  $\mu$ l/Test, left) or ABflo® 488 Rabbit anti-Rat ICAM-1/CD54 mAb (A25834, 5  $\mu$ l/Test, right).