

ABflo® 647 Rabbit anti-Rat ICAM-1/CD54 mAb

Catalog No.: A25835

Basic Information

Observed MW

Calculated MW

60kDa

Category

Primary antibody

Applications

FC

Cross-Reactivity

Rat

CloneNo number

ARC66078-ABflo647

Conjugate

ABflo® 647. Ex:648nm. Em:664nm.

Recommended Dilutions

FC 5 µl per 10⁶ cells in
100 µl volume

Background

Enables integrin binding activity. Involved in several processes, including cellular response to cytokine stimulus; cellular response to lipid; and gonad development. Located in cell surface; extracellular space; and plasma membrane. Used to study diabetic angiopathy; mesenteric vascular occlusion; nephritis; pre-eclampsia; and uveitis. Biomarker of several diseases, including cerebrovascular disease (multiple); colitis (multiple); kidney failure (multiple); lung disease (multiple); and pancreatitis (multiple). Human ortholog(s) of this gene implicated in several diseases, including autoimmune disease (multiple); biliary atresia; diabetic retinopathy; inflammatory bowel disease (multiple); and liver cirrhosis. Orthologous to human ICAM1 (intercellular adhesion molecule 1).

Immunogen Information

Gene ID

25464

Swiss Prot

Q00238

Immunogen

Recombinant fusion protein containing a sequence corresponding to amino acids 28-493 of rat ICAM-1/CD54 (NP_037099.1).

Synonyms

CD54; ICAM; Icam1

Contact

 | 400-999-6126

 | cn.market@abclonal.com.cn

 | www.abclonal.com.cn

Product Information

Source

Rabbit

Isotype

IgG

Purification

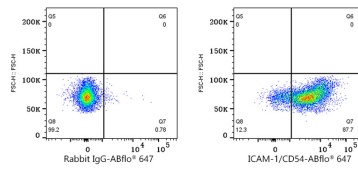
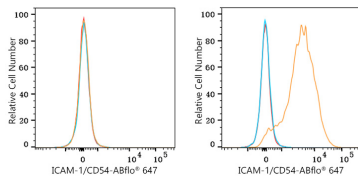
Affinity purification

Storage

Store at 2-8°C. Avoid freeze.

Buffer: PBS with 0.03% proclin300,0.2% BSA,pH7.3.

Validation Data



Flow cytometry: 1×10^6 293T cells (negative control, left) and Rat splenocytes (right) were surface-stained with ABflo® 647 Rabbit anti-Rat ICAM-1/CD54 mAb (A25835, 5 μ l/Test, orange line) or ABflo® 647 Rabbit IgG isotype control (A22070, 5 μ l/Test, blue line). Non-fluorescently stained cells were used as blank control (red line).

Flow cytometry: 1×10^6 Rat splenocytes were surface-stained with ABflo® 647 Rabbit IgG isotype control (A22070, 5 μ l/Test, left) or ABflo® 647 Rabbit anti-Rat ICAM-1/CD54 mAb (A25835, 5 μ l/Test, right).