

# CYP8B1 Rabbit pAb

Catalog No.: A25847

## Basic Information

### Observed MW

58kDa

### Calculated MW

58kDa

### Category

Primary antibody

### Applications

WB, IF-P, ELISA

### Cross-Reactivity

Human, Mouse, Rat

## Background

This gene encodes a member of the cytochrome P450 superfamily of enzymes. The cytochrome P450 proteins are monooxygenases which catalyze many reactions involved in drug metabolism and synthesis of cholesterol, steroids and other lipids. This endoplasmic reticulum membrane protein catalyzes the conversion of 7  $\alpha$ -hydroxy-4-cholesten-3-one into 7- $\alpha$ ,12- $\alpha$ -dihydroxy-4-cholesten-3-one. The balance between these two steroids determines the relative amounts of cholic acid and chenodeoxycholic acid both of which are secreted in the bile and affect the solubility of cholesterol. This gene is unique among the cytochrome P450 genes in that it is intronless.

## Recommended Dilutions

**WB** 1:500 - 1:1000

**IF-P** 1:100 - 1:500

**ELISA** Recommended starting concentration is 1  $\mu$ g/mL. Please optimize the concentration based on your specific assay requirements.

## Immunogen Information

### Gene ID

1582

### Swiss Prot

Q9UNU6

### Immunogen

Synthetic peptide. This information is considered to be commercially sensitive.

### Synonyms

CP8B; CYP12

## Contact

☎ | 400-999-6126

✉ | [cn.market@abclonal.com.cn](mailto:cn.market@abclonal.com.cn)

🌐 | [www.abclonal.com.cn](http://www.abclonal.com.cn)

## Product Information

### Source

Rabbit

### Isotype

IgG

### Purification

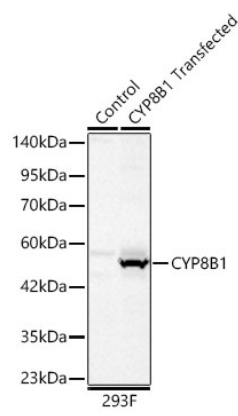
Affinity purification

### Storage

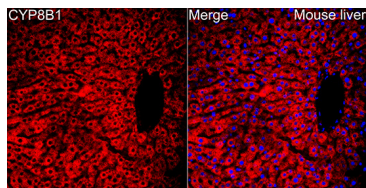
Store at -20°C. Avoid freeze / thaw cycles.

Buffer: PBS containing 50% glycerol, preserved with proclin300 or sodium azide (as specified on the Certificate of Analysis), pH 7.3.

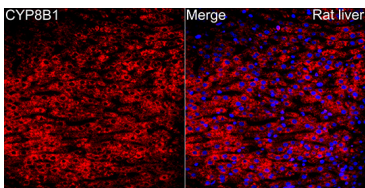
Validation Data



Western blot analysis of lysates from wild type (WT) and 293F cells transfected with CYP8B1 using CYP8B1 Rabbit pAb (A25847) at 1:1000 dilution incubated overnight at 4°C.  
Secondary antibody: HRP-conjugated Goat anti-Rabbit IgG (H+L) (AS014) at 1:10000 dilution.  
Lysates/proteins: 20 µg per lane.  
Blocking buffer: 3% nonfat dry milk in TBST.  
Detection: ECL Basic Kit (RM00020)  
.Exposure time: 30s.



Immunofluorescence analysis of Mouse liver tissue using CYP8B1 Rabbit pAb (A25847) at a dilution of 1:100 (40x lens). Secondary antibody: Cy3-conjugated Goat anti-Rabbit IgG (H+L)(AS007) at 1:500 dilution. Blue: DAPI for nuclear staining. High pressure antigen retrieval performed with 0.01M Citrate Buffer (pH 6.0) prior to IF staining.



Immunofluorescence analysis of Rat liver tissue using CYP8B1 Rabbit pAb (A25847) at a dilution of 1:100 (40x lens). Secondary antibody: Cy3-conjugated Goat anti-Rabbit IgG (H+L)(AS007) at 1:500 dilution. Blue: DAPI for nuclear staining. High pressure antigen retrieval performed with 0.01M Citrate Buffer (pH 6.0) prior to IF staining.