

CCL4 Rabbit pAb

Catalog No.: A25848

Basic Information

Observed MW

12kDa

Calculated MW

10kDa

Category

Primary antibody

Applications

ELISA, WB

Cross-Reactivity

Mouse

Background

Predicted to enable chemokine receptor binding activity and identical protein binding activity. Acts upstream of or within cellular response to xenobiotic stimulus. Located in extracellular space. Is expressed in central nervous system; genitourinary system; and retina. Human ortholog(s) of this gene implicated in acquired immunodeficiency syndrome and human immunodeficiency virus infectious disease. Orthologous to several human genes including CCL4L2 (C-C motif chemokine ligand 4 like 2).

Recommended Dilutions

WB 1:500 - 1:1000

Immunogen Information

Gene ID

20303

Swiss Prot

P14097

Immunogen

Recombinant fusion protein containing a sequence corresponding to amino acids 24-92 of mouse CCL4 (NP_038680.1).

Synonyms

Act-2; Mip1b; Scya4; MIP-1B; AT744.1

Contact

☎ | 400-999-6126

✉ | cn.market@abclonal.com.cn

🌐 | www.abclonal.com.cn

Product Information

Source

Rabbit

Isotype

IgG

Purification

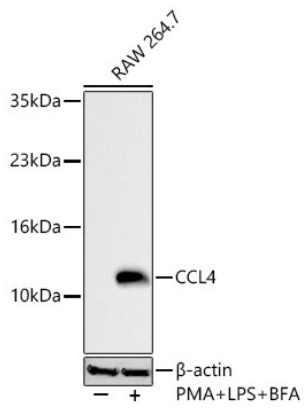
Affinity purification

Storage

Store at -20°C. Avoid freeze / thaw cycles.

Buffer: PBS with 0.05% proclin300, 50% glycerol, pH7.3.

Validation Data



Western blot analysis of lysates from RAW 264.7 cells using CCL4 Rabbit pAb (A25848) at 1:1000 dilution incubated overnight at 4°C. Raw264.7 cells were treated by PMA (80 nM) at 37°C for overnight and LPS (1 μ g/ml) at 37°C for 6 hours and Brefeldin A for 3 hours of stimulation. Secondary antibody: HRP-conjugated Goat anti-Rabbit IgG (H+L) (AS014) at 1:10000 dilution. Lysates/proteins: 30 μ g per lane. Blocking buffer: 3 % nonfat dry milk in TBST. Detection: ECL Basic Kit (RM00020). Exposure time: 30s.