

CCR7 Rabbit pAb

Catalog No.: A25849

Basic Information

Observed MW

43-50kDa

Calculated MW

43kDa

Category

Primary antibody

Applications

ELISA, WB

Cross-Reactivity

Rat

Background

Enables C-C chemokine receptor activity. Involved in several processes, including positive regulation of immune response; positive regulation of leukocyte chemotaxis; and regulation of cytokine production. Acts upstream of or within chemotaxis; homeostasis of number of cells; and immune response. Located in external side of plasma membrane. Is expressed in several structures, including alimentary system; central nervous system; immune system; reproductive system; and white fat. Used to study Sjogren's syndrome. Orthologous to human CCR7 (C-C motif chemokine receptor 7).

Recommended Dilutions

WB 1:500 - 1:1000

Immunogen Information

Gene ID

12775

Swiss Prot

P47774

Immunogen

A synthetic peptide corresponding to a sequence within amino acids 211-310 of mouse CCR7 (NP_031745.2).

Synonyms

EBI1; CCR-7; CD197; Ebi1h; Cdw197; Cmkbr7; CC-CKR-7

Contact

☎ | 400-999-6126

✉ | cn.market@abclonal.com.cn

🌐 | www.abclonal.com.cn

Product Information

Source

Rabbit

Isotype

IgG

Purification

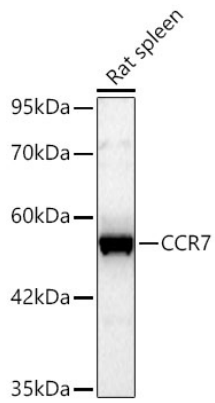
Affinity purification

Storage

Store at -20°C. Avoid freeze / thaw cycles.

Buffer: PBS with 0.05% proclin300, 50% glycerol, pH7.3.

Validation Data



Western blot analysis of lysates from Rat spleen using CCR7 Rabbit pAb (A25849) at 1:1000 dilution incubated overnight at 4°C.
Secondary antibody: HRP-conjugated Goat anti-Rabbit IgG (H+L) (AS014) at 1:10000 dilution.
Lysates/proteins: 25 µg per lane.
Blocking buffer: 3% nonfat dry milk in TBST.
Detection: ECL Basic Kit (RM00020).
Exposure time: 90s.