

ABflo® 594 Rabbit anti-Human DLL4 mAb

Catalog No.: A25867

Basic Information

Observed MW

Calculated MW

75kDa

Category

Primary antibody

Applications

FC

Cross-Reactivity

Human

CloneNo number

ARC67411-ABflo594

Conjugate

ABflo® 594. Ex:588nm. Em:604nm.

Background

This gene is a homolog of the Drosophila delta gene. The delta gene family encodes Notch ligands that are characterized by a DSL domain, EGF repeats, and a transmembrane domain.

Recommended Dilutions

FC 5 µl per 10⁶ cells in
100 µl volume

Immunogen Information

Gene ID

54567

Swiss Prot

Q9NR61

Immunogen

Recombinant fusion protein containing a sequence corresponding to amino acids 27-524 of human DLL4 (NP_061947.1).

Synonyms

AOS6; delta4; hdelta2; delta-like protein 4

Contact

☎ | 400-999-6126

✉ | cn.market@abclonal.com.cn

🌐 | www.abclonal.com.cn

Product Information

Source

Rabbit

Isotype

IgG

Purification

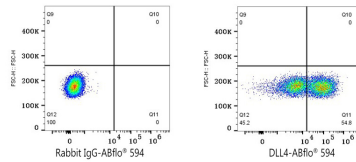
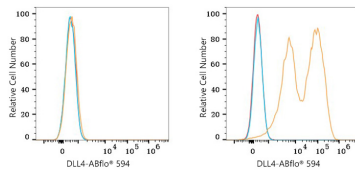
Affinity purification

Storage

Store at 2-8°C. Avoid freeze.

Buffer: PBS with 0.03% proclin300,0.2% BSA,pH7.3.

Validation Data



Flow cytometry: 1×10^6 293T cells (negative control, left) and 293T (Transfection, right) cells were surface-stained with ABflo® 594 Rabbit anti-Human DLL4 mAb (A25867,5 $\mu\text{l}/\text{Test}$, orange line) or ABflo® 594 Rabbit IgG isotype control (A23821,5 $\mu\text{l}/\text{Test}$, blue line). Non-fluorescently stained cells were used as blank control (red line).

Flow cytometry: 1×10^6 293T (Transfection) cells were surface-stained with ABflo® 594 Rabbit IgG isotype control (A23821,5 $\mu\text{l}/\text{Test}$, left) or ABflo® 594 Rabbit anti-Human DLL4 mAb (A25867,5 $\mu\text{l}/\text{Test}$, right).