

ABflo® 647 Rabbit anti-Human SIGLEC9 mAb

Catalog No.: A25869

Basic Information

Observed MW

Calculated MW

50kDa,52kDa

Category

Primary antibody

Applications

FC

Cross-Reactivity

Human

CloneNo number

ARC66465-ABflo647

Conjugate

ABflo® 647. Ex:648nm. Em:664nm.

Background

Predicted to enable monosaccharide binding activity and sialic acid binding activity. Predicted to be involved in cell adhesion. Predicted to act upstream of or within negative regulation of inflammatory response and negative regulation of phagocytosis, engulfment. Predicted to be located in external side of plasma membrane. Predicted to be active in plasma membrane.

Recommended Dilutions

FC 5 µl per 10⁶ cells in
100 µl volume

Immunogen Information

Gene ID

27180

Swiss Prot

Q9Y336

Immunogen

Recombinant fusion protein containing a sequence corresponding to amino acids 18-348 of human SIGLEC9 (NP_055256.1).

Synonyms

CD329; CDw329; FOAP-9; siglec-9; OBBP-LIKE

Contact

☎ | 400-999-6126

✉ | cn.market@abclonal.com.cn

🌐 | www.abclonal.com.cn

Product Information

Source

Rabbit

Isotype

IgG

Purification

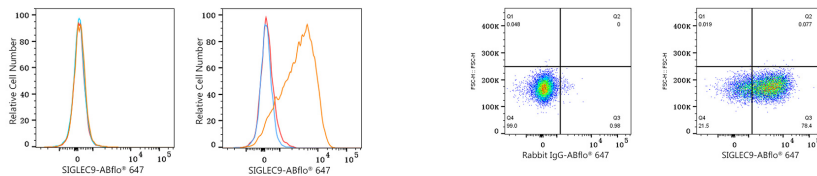
Affinity purification

Storage

Store at 2-8°C. Avoid freeze.

Buffer: PBS with 0.03% proclin300,0.2% BSA,pH7.3.

Validation Data



Flow cytometry: 1×10^6 293F cells (negative control, left) and U-937 cells (right) were surface-stained with ABflo® 647 Rabbit anti-Human SIGLEC9 mAb (A25869, 5 μ l/Test, orange line) or ABflo® 647 Rabbit IgG isotype control (A22070, 5 μ l/Test, blue line). Non-fluorescently stained cells were used as blank control (red line).

Flow cytometry: 1×10^6 U-937 cells were surface-stained with ABflo® 647 Rabbit IgG isotype control (A22070, 5 μ l/Test, left) or ABflo® 647 Rabbit anti-Human SIGLEC9 mAb (A25869, 5 μ l/Test, right).