

ABflo® 594 Rabbit anti-Human Siglec-9 mAb

Catalog No.: A25870

Basic Information

Observed MW

Calculated MW

50kDa, 52kDa

Category

Primary antibody

Applications

FC

Cross-Reactivity

Human

CloneNo number

ARC66465

Conjugate

ABflo® 594. Ex:588nm. Em:604nm.

Background

Predicted to enable monosaccharide binding activity and sialic acid binding activity. Predicted to be involved in cell adhesion. Predicted to act upstream of or within negative regulation of inflammatory response and negative regulation of phagocytosis, engulfment. Predicted to be located in external side of plasma membrane. Predicted to be active in plasma membrane.

Recommended Dilutions

FC 5 µl per 10⁶ cells in
100 µl volume

Immunogen Information

Gene ID

27180

Swiss Prot

Q9Y336

Immunogen

Recombinant protein (or fragment). This information is considered to be commercially sensitive.

Synonyms

CD329; CDw329; FOAP-9; siglec-9; OBBP-LIKE

Contact

 | 400-999-6126

 | cn.market@abclonal.com.cn

 | www.abclonal.com.cn

Product Information

Source

Rabbit

Isotype

IgG

Purification

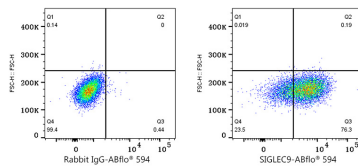
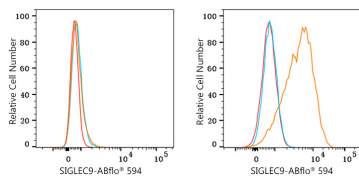
Affinity purification

Storage

Store at 2-8°C. Avoid freeze.

Buffer: PBS containing 0.2% BSA, preserved with proclin300 or sodium azide (as specified on the Certificate of Analysis), pH 7.3.

Validation Data



Flow cytometry: 1×10^6 293F cells (negative control, left) and U-937 cells (right) were surface-stained with ABflo® 594 Rabbit anti-Human SIGLEC9 mAb (A25870, 5 μ l/Test, orange line) or ABflo® 594 Rabbit IgG isotype control (A23821, 5 μ l/Test, blue line). Non-fluorescently stained cells were used as blank control (red line).

Flow cytometry: 1×10^6 U-937 cells were surface-stained with ABflo® 594 Rabbit IgG isotype control (A23821, 5 μ l/Test, left) or ABflo® 594 Rabbit anti-Human SIGLEC9 mAb (A25870, 5 μ l/Test, right).