

IL23R Rabbit mAb

Catalog No.: A25882 **Recombinant**

Basic Information

Observed MW

Calculated MW

41kDa/43kDa/72kDa

Category

Primary antibody

Applications

ELISA,FC

Cross-Reactivity

Human

CloneNo number

ARC66641

Background

The protein encoded by this gene is a subunit of the receptor for IL23A/IL23. This protein pairs with the receptor molecule IL12RB1/IL12Rbeta1, and both are required for IL23A signaling. This protein associates constitutively with Janus kinase 2 (JAK2), and also binds to transcription activator STAT3 in a ligand-dependent manner.

Recommended Dilutions

FC 1:500 - 1:1000

Immunogen Information

Gene ID

149233

Swiss Prot

Q5VWK5

Immunogen

Recombinant fusion protein containing a sequence corresponding to amino acids 124-353 of human IL23R (NP_653302.2).

Synonyms

PSORS7

Contact

☎ | 400-999-6126

✉ | cn.market@abclonal.com.cn

🌐 | www.abclonal.com.cn

Product Information

Source

Rabbit

Isotype

IgG

Purification

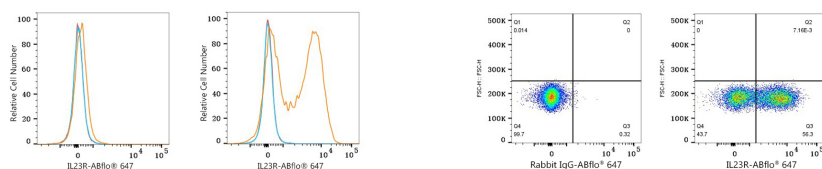
Affinity purification

Storage

Store at -20°C. Avoid freeze / thaw cycles.

Buffer: PBS with 0.05% proclin300,0.05% BSA,50% glycerol,pH7.3.

Validation Data



Flow cytometry: 1X10⁶ 293F cells (negative control, left) and 293F (Transfection, right) cells were surface-stained with IL23R Rabbit mAb (A25882, 2 µg/mL, orange line) or Rabbit IgG isotype control (AC042, 2 µg/mL, blue line), followed by Alexa Fluor® 647 conjugated goat anti-rabbit pAb staining. Non-fluorescently stained cells were used as blank control (red line).

Flow cytometry: 1X10⁶ 293F(Transfection) cells were surface-stained with Rabbit IgG isotype control (AC042, 2 µg/mL, left) or IL23R Rabbit mAb (A25882, 2 µg/mL, right), followed by Alexa Fluor® 647 conjugated goat anti-rabbit pAb staining.