

PE Rabbit anti-Human CD24 mAb

Catalog No.: A25885

Basic Information

Observed MW

Calculated MW

8kDa; 13kDa

Category

Primary antibody

Applications

FC

Cross-Reactivity

Human

CloneNo number

ARC66763-PE

Conjugate

PE. Ex:565nm. Em:574nm.

Background

This gene encodes a sialoglycoprotein that is expressed on mature granulocytes and B cells and modulates growth and differentiation signals to these cells. The precursor protein is cleaved to a short 32 amino acid mature peptide which is anchored via a glycosyl phosphatidylinositol (GPI) link to the cell surface. This gene was missing from previous genome assemblies, but is properly located on chromosome 6. Non-transcribed pseudogenes have been designated on chromosomes 1, 15, 20, and Y. Alternative splicing results in multiple transcript variants.

Recommended Dilutions

FC 5 μ l per 10^6 cells in
100 μ l volume

Immunogen Information

Gene ID

100133941

Swiss Prot

P25063

Immunogen

A synthetic peptide corresponding to a sequence within amino acids 1-80 of human CD24 (NP_037362.1).

Synonyms

CD24A; CD24

Contact

☎ | 400-999-6126

✉ | cn.market@abclonal.com.cn

🌐 | www.abclonal.com.cn

Product Information

Source

Rabbit

Isotype

IgG

Purification

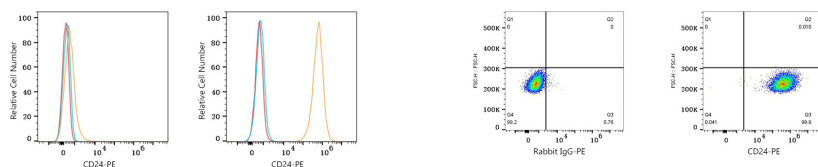
Affinity purification

Storage

Store at 2-8°C. Avoid freeze.

Buffer: PBS with 0.03% proclin300, 0.2% BSA, pH7.3.

Validation Data



Flow cytometry: 1X10⁶ 293F cells (Low Expression, left) and MCF7 cells (right) were surface-stained with PE Rabbit anti-Human CD24 mAb (A25885, 5 µl/Test, orange line) or PE Rabbit IgG isotype control (A24172, 5 µl/Test, blue line). Non-fluorescently stained cells were used as blank control (red line).

Flow cytometry: 1X10⁶ MCF7 cells were surface-stained with PE Rabbit IgG isotype control (A24172, 5 µl/Test, left) or PE Rabbit anti-Human CD24 mAb (A25885, 5 µl/Test, right).