

ABflo® 647 Rabbit anti-Human/Monkey CD69 mAb

Catalog No.: A25892

Basic Information

Observed MW

Calculated MW
23kDa

Category
Primary antibody

Applications
FC

Cross-Reactivity
Human, Cynomolgus

CloneNo number
ARC68505

Conjugate
ABflo® 647. Ex:648nm. Em:664nm.

Background

This gene encodes a member of the calcium dependent lectin superfamily of type II transmembrane receptors. Expression of the encoded protein is induced upon activation of T lymphocytes, and may play a role in proliferation. Furthermore, the protein may act to transmit signals in natural killer cells and platelets.

Recommended Dilutions

FC 5 µl per 10⁶ cells in
100 µl volume

Immunogen Information

Gene ID	Swiss Prot
969	Q07108

Immunogen

Recombinant protein (or fragment). This information is considered to be commercially sensitive.

Synonyms

AIM; EA1; MLR-3; CLEC2C; GP32/28; BL-AC/P26

Contact

☎	400-999-6126
✉	cn.market@abclonal.com.cn
🌐	www.abclonal.com.cn

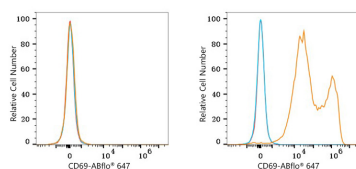
Product Information

Source	Isotype	Purification
Rabbit	IgG	Affinity purification

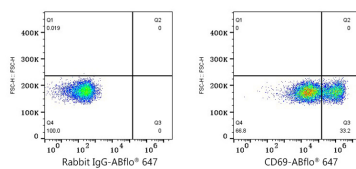
Storage

Store at 2-8°C. Avoid freeze.
Buffer: PBS containing 0.2% BSA, preserved with proclin300 or sodium azide (as specified on the Certificate of Analysis), pH 7.3.

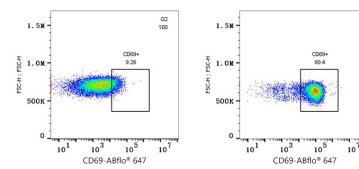
Validation Data



Flow cytometry: 1×10^6 293T cells (negative control, left) and 293T (Transfection, right) cells were surface-stained with ABflo® 647 Rabbit anti-Human CD69 mAb (A25892, 5 μ l/Test, orange line) or ABflo® 647 Rabbit IgG isotype control (A22070, 5 μ l/Test, blue line). Non-fluorescently stained cells were used as blank control (red line).



Flow cytometry: 1×10^6 293T (Transfection) cells were surface-stained with ABflo® 647 Rabbit IgG isotype control (A22070, 5 μ l/Test, left) or ABflo® 647 Rabbit anti-Human CD69 mAb (A25892, 5 μ l/Test, right).



Flow cytometry: 1×10^6 Human PBMC (untreated, left) and Human PBMC (treated with 50 ng/mL PMA and 1 ug/mL Ionomycin for 4-6 hours, right) were surface-stained with ABflo® 647 Rabbit anti-Human/Monkey CD69 mAb (A25892, 5 μ l/Test). Cells in the lymphocyte gate were used for analysis.