

ABflo® 647 Rabbit anti-Human CD34 mAb

Catalog No.: A25894

Basic Information

Observed MW

Calculated MW

35kDa/41kDa

Category

Primary antibody

Applications

IF/ICC,FC

Cross-Reactivity

Human

CloneNo number

ARC67795-ABflo647

Conjugate

ABflo® 647. Ex:648nm. Em:664nm.

Recommended Dilutions

IF/ICC 1:50 - 1:200

FC 5 µl per 10⁶ cells in
100 µl volume

Background

The protein encoded by this gene may play a role in the attachment of stem cells to the bone marrow extracellular matrix or to stromal cells. This single-pass membrane protein is highly glycosylated and phosphorylated by protein kinase C. Two transcript variants encoding different isoforms have been found for this gene.

Immunogen Information

Gene ID

947

Swiss Prot

P28906

Immunogen

Recombinant fusion protein containing a sequence corresponding to amino acids 170-290 of human CD34 (NP_001020280.1).

Synonyms

CD34;CD34 molecule;GIG3;MORT1

Contact

☎ | 400-999-6126

✉ | cn.market@abclonal.com.cn

🌐 | www.abclonal.com.cn

Product Information

Source

Rabbit

Isotype

IgG

Purification

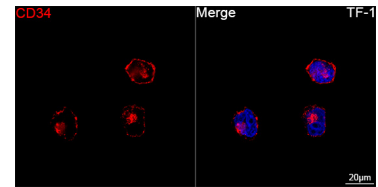
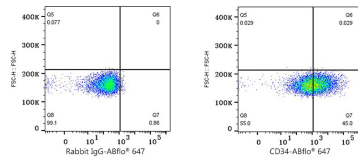
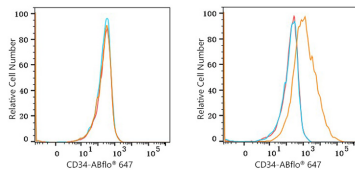
Affinity purification

Storage

Store at 2-8°C. Avoid freeze.

Buffer: PBS with 0.03% proclin300,0.2% BSA,pH7.3.

Validation Data



Flow cytometry: 1X10⁶ HeLa cells (negative control, left) and MOLT-4 cells (right) were surface-stained with ABflo® 647 Rabbit anti-Human CD34 mAb (A25894, 5 µl/Test, orange line) or ABflo® 647 Rabbit IgG isotype control (A22070, 5 µl/Test, blue line). Non-fluorescently stained cells were used as blank control (red line).

Flow cytometry: 1X10⁶ MOLT-4 cells were surface-stained with ABflo® 647 Rabbit IgG isotype control (A22070, 5 µl/Test, left) or ABflo® 647 Rabbit anti-Human CD34 mAb (A25894, 5 µl/Test, right).

Confocal imaging of TF-1 cells using ABflo® 647 Rabbit anti-Human CD34 mAb (A25894, dilution 1:100) (Red). DAPI was used for nuclear staining (Blue). Objective: 100x.