

# Mast Cell Tryptase Rabbit mAb

Catalog No.: A25903 **Recombinant**

## Basic Information

### Observed MW

25-40 kDa

### Calculated MW

31 kDa

### Category

Primary antibody

### Applications

WB, IHC-P, IP, ELISA

### Cross-Reactivity

Human, Mouse

### CloneNo number

ARC3290

## Background

Tryptases comprise a family of trypsin-like serine proteases, the peptidase family S1. Tryptases are enzymatically active only as heparin-stabilized tetramers, and they are resistant to all known endogenous proteinase inhibitors. Several tryptase genes are clustered on chromosome 16p13.3. These genes are characterized by several distinct features. They have a highly conserved 3' UTR and contain tandem repeat sequences at the 5' flank and 3' UTR which are thought to play a role in regulation of the mRNA stability. These genes have an intron immediately upstream of the initiator Met codon, which separates the site of transcription initiation from protein coding sequence. This feature is characteristic of tryptases but is unusual in other genes. The alleles of this gene exhibit an unusual amount of sequence variation, such that the alleles were once thought to represent two separate genes, alpha and beta 1. Beta tryptases appear to be the main isoenzymes expressed in mast cells; whereas in basophils, alpha tryptases predominate. Tryptases have been implicated as mediators in the pathogenesis of asthma and other allergic and inflammatory disorders.

## Recommended Dilutions

<b>WB</b>	1:500 - 1:4000
<b>IHC-P</b>	1:20000 - 1:80000
<b>IP</b>	0.5µg-4µg antibody for 200µg-400µg extracts of whole cells
<b>ELISA</b>	Recommended starting concentration is 1 µg/mL. Please optimize the concentration based on your specific assay requirements.

## Contact

 | 400-999-6126

 | [cn.market@abclonal.com.cn](mailto:cn.market@abclonal.com.cn)

 | [www.abclonal.com.cn](http://www.abclonal.com.cn)

## Immunogen Information

### Gene ID

7177

### Swiss Prot

Q15661

### Immunogen

Synthetic peptide. This information is considered to be commercially sensitive.

### Synonyms

TPS1; TPS2; TPSB1; TPSB2; Tryptase-2

## Product Information

### Source

Rabbit

### Isotype

IgG

### Purification

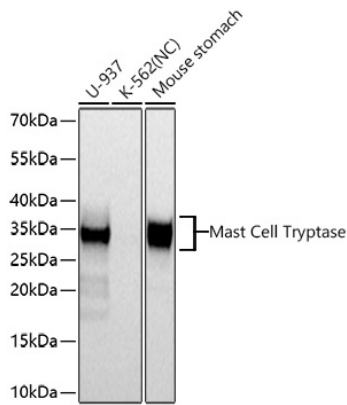
Affinity purification

### Storage

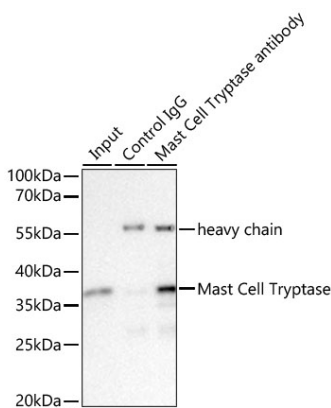
Store at -20°C. Avoid freeze / thaw cycles.

Buffer: PBS containing 50% glycerol and 0.05% BSA, preserved with proclin300 or sodium azide (as specified on the Certificate of Analysis), pH 7.3.

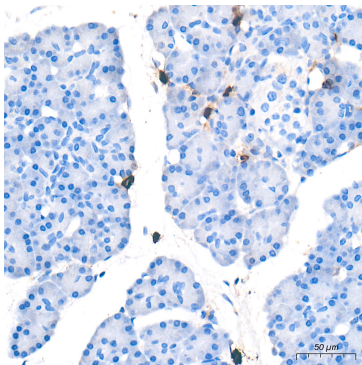
## Validation Data



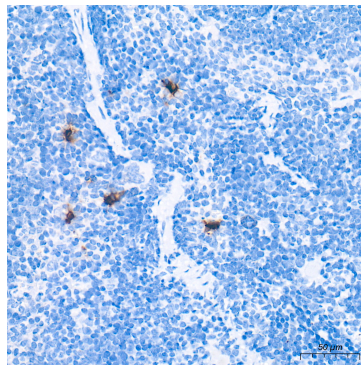
Western blot analysis of various lysates using Mast Cell Tryptase Rabbit mAb (A25903) at 1:2000 dilution incubated at room temperature for 1.5 hours. Secondary antibody: HRP-conjugated Goat anti-Rabbit IgG (H+L) (AS014) at 1:10000 dilution. Lysates/proteins: 25 µg per lane. Blocking buffer: 3% nonfat dry milk in TBST. Detection: ECL Basic Kit (RM00020). Negative control (NC): K-562. Exposure time: 5 s.



Immunoprecipitation of Mast Cell Tryptase from 300 µg extracts of U-937 cells was performed using 0.5 µg of Mast Cell Tryptase Rabbit mAb (A25903). Rabbit IgG isotype control (AC042) was used to precipitate the Control IgG sample. IP samples were eluted with 1X Laemmli Buffer. The Input lane represents 10% of the total input. Western blot analysis of immunoprecipitates was conducted using Mast Cell Tryptase Rabbit mAb (A25903) at a dilution of 1:1000.



Immunohistochemistry analysis of paraffin-embedded Human pancreas tissue using Mast Cell Tryptase Rabbit mAb (A25903) at a dilution of 1:20000 (40x lens). High pressure antigen retrieval performed with 0.01M Tris-EDTA Buffer (pH 9.0) prior to IHC staining.



Immunohistochemistry analysis of paraffin-embedded Mouse spleen tissue using Mast Cell Tryptase Rabbit mAb (A25903) at a dilution of 1:20000 (40x lens). High pressure antigen retrieval performed with 0.01M Tris-EDTA Buffer (pH 9.0) prior to IHC staining.