

Fibronectin Rabbit pAb

Catalog No.: A25907

Basic Information

Observed MW

300kDa

Calculated MW

273kDa

Category

Primary antibody

Applications

ELISA, WB

Cross-Reactivity

Human, Mouse, Rat

Background

Enables peptidase activator activity. Acts upstream of or within several processes, including calcium-independent cell-matrix adhesion; cell-substrate junction assembly; and positive regulation of axon extension. Located in apical plasma membrane and basement membrane. Is expressed in several structures, including alimentary system; cardiovascular system; egg cylinder; embryo mesenchyme; and genitourinary system. Human ortholog(s) of this gene implicated in calcium oxalate nephrolithiasis; membranoproliferative glomerulonephritis; and spondylometaphyseal dysplasia corner fracture type. Orthologous to human FN1 (fibronectin 1).

Recommended Dilutions

WB 1:500 - 1:1000

Immunogen Information

Gene ID

14268

Swiss Prot

P11276

Immunogen

Recombinant fusion protein containing a sequence corresponding to amino acids 2205-2477 of mouse Fibronectin (NP_034363.1).

Synonyms

Fn; Fn-1; E330027109

Contact

☎ | 400-999-6126

✉ | cn.market@abclonal.com.cn

🌐 | www.abclonal.com.cn

Product Information

Source

Rabbit

Isotype

IgG

Purification

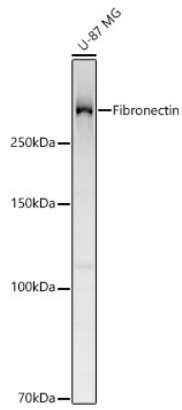
Affinity purification

Storage

Store at -20°C. Avoid freeze / thaw cycles.

Buffer: PBS with 0.09% Sodium azide, 50% glycerol, pH7.3.

Validation Data



Western blot analysis of lysates from U-87 MG cells using Fibronectin Rabbit pAb (A25907) at 1:1000 dilution incubated overnight at 4°C.
Secondary antibody: HRP-conjugated Goat anti-Rabbit IgG (H+L) (AS014) at 1:10000 dilution.
Lysates/proteins: 25 µg per lane.
Blocking buffer: 3% nonfat dry milk in TBST.
Detection: ECL Basic Kit (RM00020).
Exposure time: 90s.