

# CD226 Rabbit mAb

Catalog No.: A25908 **Recombinant**

## Basic Information

### Observed MW

Refer to figures

### Calculated MW

38kDa

### Category

Primary antibody

### Applications

ELISA,FC

### Cross-Reactivity

Mouse

### CloneNo number

ARC67159

## Background

Predicted to enable integrin binding activity and protein kinase binding activity. Acts upstream of or within positive regulation of interferon-gamma production and positive regulation of natural killer cell cytokine production. Located in external side of plasma membrane. Is expressed in embryo. Orthologous to human CD226 (CD226 molecule).

## Recommended Dilutions

FC 1:500 - 1:1000

## Immunogen Information

### Gene ID

225825

### Swiss Prot

Q8K4F0

### Immunogen

Recombinant fusion protein containing a sequence corresponding to amino acids 19-254 of mouse CD226 (NP\_848802.2).

### Synonyms

Pta1; DNAM1; DNAM-1; TLI5A1

## Contact

 | 400-999-6126

 | [cn.market@abclonal.com.cn](mailto:cn.market@abclonal.com.cn)

 | [www.abclonal.com.cn](http://www.abclonal.com.cn)

## Product Information

### Source

Rabbit

### Isotype

IgG

### Purification

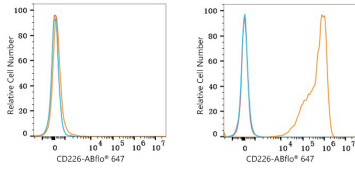
Affinity purification

### Storage

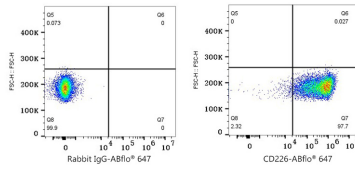
Store at -20°C. Avoid freeze / thaw cycles.

Buffer: PBS with 0.05% proclin300,0.05% BSA,50% glycerol,pH7.3.

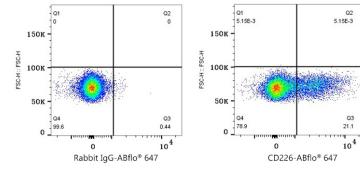
## Validation Data



Flow cytometry:  $1 \times 10^6$  293T cells (negative control, left) and 293T (Transfection, right) cells were surface-stained with CD226 Rabbit mAb (A25908, 2  $\mu\text{g}/\text{mL}$ , orange line) or Rabbit IgG isotype control (AC042, 2  $\mu\text{g}/\text{mL}$ , blue line), followed by Alexa Fluor® 647 conjugated goat anti-rabbit pAb staining. Non-fluorescently stained cells were used as blank control (red line).



Flow cytometry:  $1 \times 10^6$  293T (Transfection) cells were surface-stained with Rabbit IgG isotype control (AC042, 2  $\mu\text{g}/\text{mL}$ , left) or CD226 Rabbit mAb (A25908, 2  $\mu\text{g}/\text{mL}$ , right), followed by Alexa Fluor® 647 conjugated goat anti-rabbit pAb staining.



Flow cytometry:  $1 \times 10^6$  C57BL/6 Splenocytes cells were surface-stained with Rabbit IgG isotype control (AC042, 2  $\mu\text{g}/\text{mL}$ , left) or CD226 Rabbit mAb (A25908, 2  $\mu\text{g}/\text{mL}$ , right), followed by Alexa Fluor® 647 conjugated goat anti-rabbit pAb staining.