

PE Rabbit anti-Human CD5 mAb

Catalog No.: A25909

Basic Information

Observed MW

Refer to figures

Calculated MW

55kDa

Category

Primary antibody

Applications

FC

Cross-Reactivity

Human

CloneNo number

ARC53917-PE

Conjugate

PE. Ex:565nm. Em:574nm.

Recommended Dilutions

FC 5 μ l per 10^6 cells in
100 μ l volume

Background

This gene encodes a member of the scavenger receptor cysteine-rich (SRCR) superfamily. Members of this family are secreted or membrane-anchored proteins mainly found in cells associated with the immune system. This protein is a type-I transmembrane glycoprotein found on the surface of thymocytes, T lymphocytes and a subset of B lymphocytes. The encoded protein contains three SRCR domains and may act as a receptor to regulate T-cell proliferation. Alternative splicing results in multiple transcript variants encoding different isoforms.

Immunogen Information

Gene ID

921

Swiss Prot

P06127

Immunogen

Recombinant fusion protein containing a sequence corresponding to amino acids 25-371 of human CD5 (NP_055022.2).

Synonyms

CD5; LEU1; T1; CD5 molecule

Contact

☎ | 400-999-6126

✉ | cn.market@abclonal.com.cn

🌐 | www.abclonal.com.cn

Product Information

Source

Rabbit

Isotype

IgG

Purification

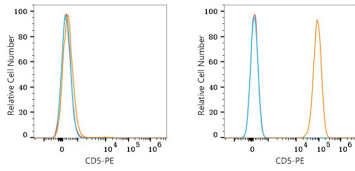
Affinity purification

Storage

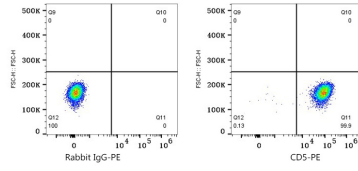
Store at 2-8°C. Avoid freeze.

Buffer: PBS with 0.03% proclin300,0.2% BSA,pH7.3.

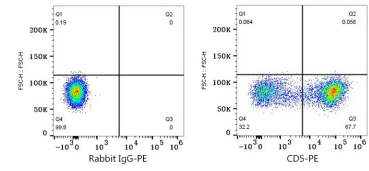
Validation Data



Flow cytometry: 1×10^6 K-562 cells (negative control, left) and MOLT-4 cells (right) were surface-stained with PE Rabbit anti-Human CD5 mAb (A25909,5 $\mu\text{l}/\text{Test}$, orange line) or PE Rabbit IgG isotype control (A24172,5 $\mu\text{l}/\text{Test}$, blue line). Non-fluorescently stained cells were used as blank control (red line).



Flow cytometry: 1×10^6 MOLT-4 cells were surface-stained with PE Rabbit IgG isotype control (A24172,5 $\mu\text{l}/\text{Test}$, left) or PE Rabbit anti-Human CD5 mAb (A25909,5 $\mu\text{l}/\text{Test}$, right).



Flow cytometry: 1×10^6 Human PBMC were surface-stained with PE Rabbit IgG isotype control (A24172,5 $\mu\text{l}/\text{Test}$, left) or PE Rabbit anti-Human CD5 mAb (A25909,5 $\mu\text{l}/\text{Test}$, right).