

APC Rabbit anti-Human/Mouse Integrin alpha 5 (ITGA5/CD49e) mAb

Catalog No.: A25911

Basic Information

Observed MW

Refer to figures

Calculated MW

115kDa

Category

Primary antibody

Applications

FC

Cross-Reactivity

Human, Mouse

CloneNo number

ARC58294-APC

Conjugate

APC. Ex:650nm. Em:660nm.

Recommended Dilutions

FC 5 μ l per 10^6 cells in
100 μ l volume

Background

The product of this gene belongs to the integrin alpha chain family. Integrins are heterodimeric integral membrane proteins composed of an alpha subunit and a beta subunit that function in cell surface adhesion and signaling. The encoded preproprotein is proteolytically processed to generate light and heavy chains that comprise the alpha 5 subunit. This subunit associates with the beta 1 subunit to form a fibronectin receptor. This integrin may promote tumor invasion, and higher expression of this gene may be correlated with shorter survival time in lung cancer patients. Note that the integrin alpha 5 and integrin alpha V subunits are encoded by distinct genes.

Immunogen Information

Gene ID

3678

Swiss Prot

P08648

Immunogen

Recombinant fusion protein containing a sequence corresponding to amino acids 42-995 of human Integrin alpha 5 (ITGA5/CD49e) (NP_002196.4).

Synonyms

FNRA; CD49e; VLA-5; VLA5A

Contact

 | 400-999-6126

 | cn.market@abclonal.com.cn

 | www.abclonal.com.cn

Product Information

Source

Rabbit

Isotype

IgG

Purification

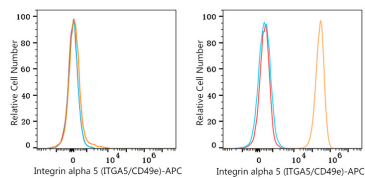
Affinity purification

Storage

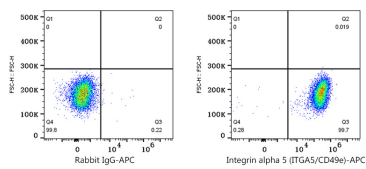
Store at 2-8°C. Avoid freeze.

Buffer: PBS with 0.03% proclin300,0.2% BSA,pH7.3.

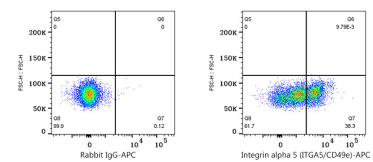
Validation Data



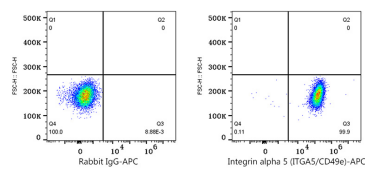
Flow cytometry: 1×10^6 SH-SY5Y cells (negative control, left) and U-87MG cells (right) were surface-stained with APC Rabbit anti-Human/Mouse Integrin alpha 5 (ITGA5/CD49e) mAb (A25911, 5 μ l/Test, orange line) or APC Rabbit IgG isotype control (A24173, 5 μ l/Test, blue line). Non-fluorescently stained cells were used as blank control (red line).



Flow cytometry: 1×10^6 U-87MG cells were surface-stained with APC Rabbit IgG isotype control (A24173, 5 μ l/Test, left) or APC Rabbit anti-Human/Mouse Integrin alpha 5 (ITGA5/CD49e) mAb (A25911, 5 μ l/Test, right).



Flow cytometry: 1×10^6 Human PBMC were surface-stained with APC Rabbit IgG isotype control (A24173, 5 μ l/Test, left) or APC Rabbit anti-Human/Mouse Integrin alpha 5 (ITGA5/CD49e) mAb (A25911, 5 μ l/Test, right).



Flow cytometry: 1×10^6 NIH/3T3 cells were surface-stained with APC Rabbit IgG isotype control (A24173, 5 μ l/Test, left) or APC Rabbit anti-Human/Mouse Integrin alpha 5 (ITGA5/CD49e) mAb (A25911, 5 μ l/Test, right).