

# PE Rabbit anti-Human/Mouse Integrin alpha 5 (ITGA5/CD49e) mAb

Catalog No.: A25912

## Basic Information

### Observed MW

Refer to figures

### Calculated MW

115kDa

### Category

Primary antibody

### Applications

FC

### Cross-Reactivity

Human, Mouse

### CloneNo number

ARC58294-PE

### Conjugate

PE. Ex:565nm. Em:574nm.

## Recommended Dilutions

**FC** 5  $\mu$ l per  $10^6$  cells in  
100  $\mu$ l volume

## Background

The product of this gene belongs to the integrin alpha chain family. Integrins are heterodimeric integral membrane proteins composed of an alpha subunit and a beta subunit that function in cell surface adhesion and signaling. The encoded preproprotein is proteolytically processed to generate light and heavy chains that comprise the alpha 5 subunit. This subunit associates with the beta 1 subunit to form a fibronectin receptor. This integrin may promote tumor invasion, and higher expression of this gene may be correlated with shorter survival time in lung cancer patients. Note that the integrin alpha 5 and integrin alpha V subunits are encoded by distinct genes.

## Immunogen Information

### Gene ID

3678

### Swiss Prot

P08648

### Immunogen

Recombinant fusion protein containing a sequence corresponding to amino acids 42-995 of human Integrin alpha 5 (ITGA5/CD49e) (NP\_002196.4).

### Synonyms

FNRA; CD49e; VLA-5; VLA5A

## Contact

 | 400-999-6126

 | [cn.market@abclonal.com.cn](mailto:cn.market@abclonal.com.cn)

 | [www.abclonal.com.cn](http://www.abclonal.com.cn)

## Product Information

### Source

Rabbit

### Isotype

IgG

### Purification

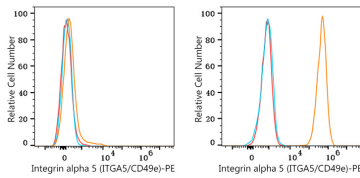
Affinity purification

### Storage

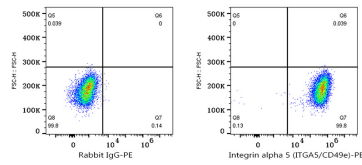
Store at 2-8°C. Avoid freeze.

Buffer: PBS with 0.03% proclin300,0.2% BSA,pH7.3.

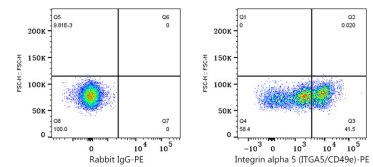
## Validation Data



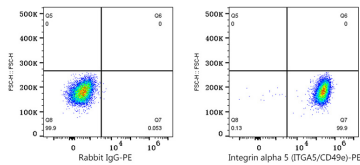
Flow cytometry:  $1 \times 10^6$  SH-SY5Y cells (negative control, left) and U-87MG cells (right) were surface-stained with PE Rabbit anti-Human/Mouse Integrin alpha 5 (ITGA5/CD49e) mAb (A25912, 5  $\mu$ l/Test, orange line) or PE Rabbit IgG isotype control (A24172, 5  $\mu$ l/Test, blue line). Non-fluorescently stained cells were used as blank control (red line).



Flow cytometry:  $1 \times 10^6$  U-87MG cells were surface-stained with PE Rabbit IgG isotype control (A24172, 5  $\mu$ l/Test, left) or PE Rabbit anti-Human/Mouse Integrin alpha 5 (ITGA5/CD49e) mAb (A25912, 5  $\mu$ l/Test, right).



Flow cytometry:  $1 \times 10^6$  Human PBMC were surface-stained with PE Rabbit IgG isotype control (A24172, 5  $\mu$ l/Test, left) or PE Rabbit anti-Human/Mouse Integrin alpha 5 (ITGA5/CD49e) mAb (A25912, 5  $\mu$ l/Test, right).



Flow cytometry:  $1 \times 10^6$  NIH/3T3 cells were surface-stained with PE Rabbit IgG isotype control (A24172, 5  $\mu$ l/Test, left) or PE Rabbit anti-Human/Mouse Integrin alpha 5 (ITGA5/CD49e) mAb (A25912, 5  $\mu$ l/Test, right).