

# CD43 Rabbit mAb

Catalog No.: A25917 **Recombinant**

## Basic Information

### Observed MW

Refer to figures

### Calculated MW

40kDa

### Category

Primary antibody

### Applications

ELISA, IHC-P

### Cross-Reactivity

Human

### CloneNo number

ARC67814

## Background

This gene encodes a highly sialylated glycoprotein that functions in antigen-specific activation of T cells, and is found on the surface of thymocytes, T lymphocytes, monocytes, granulocytes, and some B lymphocytes. It contains a mucin-like extracellular domain, a transmembrane region and a carboxy-terminal intracellular region. The extracellular domain has a high proportion of serine and threonine residues, allowing extensive O-glycosylation, and has one potential N-glycosylation site, while the carboxy-terminal region has potential phosphorylation sites that may mediate transduction of activation signals. Different glycoforms of this protein have been described. In stimulated immune cells, proteolytic cleavage of the extracellular domain occurs in some cell types, releasing a soluble extracellular fragment. Defects in expression of this gene are associated with Wiskott-Aldrich syndrome.

## Recommended Dilutions

IHC-P 1:500 - 1:1000

## Immunogen Information

### Gene ID

6693

### Swiss Prot

P16150

### Immunogen

A synthetic peptide corresponding to a sequence within amino acids 1-100 of human CD43 (NP\_003114.1).

### Synonyms

LSN; CD43; GALGP; GPL115; LEU-22

## Contact

☎ | 400-999-6126

✉ | [cn.market@abclonal.com.cn](mailto:cn.market@abclonal.com.cn)

🌐 | [www.abclonal.com.cn](http://www.abclonal.com.cn)

## Product Information

### Source

Rabbit

### Isotype

IgG

### Purification

Affinity purification

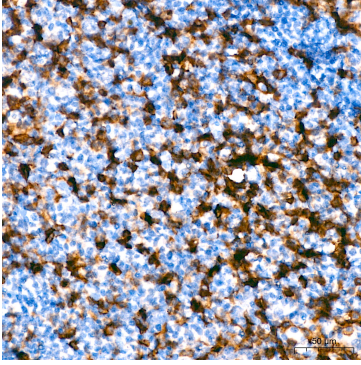
### Storage

Store at -20°C. Avoid freeze / thaw cycles.

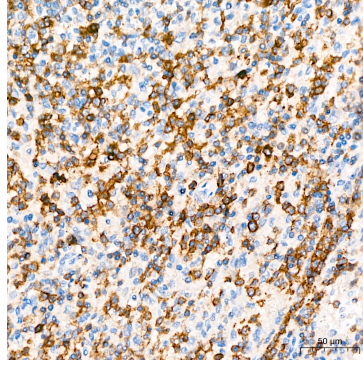
Buffer: PBS with 0.05% proclin300, 0.05% BSA, 50% glycerol, pH7.3.

## Validation Data

---



Immunohistochemistry analysis of paraffin-embedded Human tonsil tissue using CD43 Rabbit mAb (A25917) at a dilution of 1:1000 (40x lens). High pressure antigen retrieval performed with 0.01M Citrate Buffer(pH 6.0) prior to IHC staining.



Immunohistochemistry analysis of paraffin-embedded Human spleen tissue using CD43 Rabbit mAb (A25917) at a dilution of 1:1000 (40x lens). High pressure antigen retrieval performed with 0.01M Citrate Buffer(pH 6.0) prior to IHC staining.