

Yipf6 Rabbit mAb

Catalog No.: A25920 **Recombinant**

Basic Information

Observed MW

50kDa

Calculated MW

26kDa

Category

Primary antibody

Applications

ELISA, WB

Cross-Reactivity

Mouse

CloneNo number

ARC64940

Background

Enables identical protein binding activity. Acts upstream of or within intestinal epithelial cell development. Located in COPII-coated ER to Golgi transport vesicle; cis-Golgi network; and trans-Golgi network. Orthologous to human YIPF6 (Yip1 domain family member 6).

Recommended Dilutions

WB 1:500 - 1:1000

Immunogen Information

Gene ID

77929

Swiss Prot

Q8BR70

Immunogen

Recombinant fusion protein containing a sequence corresponding to amino acids 1-83 of mouse Yipf6 (NP_997516.1).

Synonyms

A430107J06Rik

Contact

 | 400-999-6126

 | cn.market@abclonal.com.cn

 | www.abclonal.com.cn

Product Information

Source

Rabbit

Isotype

IgG

Purification

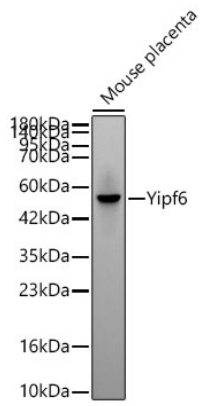
Affinity purification

Storage

Store at -20°C. Avoid freeze / thaw cycles.

Buffer: PBS with 0.05% proclin300, 0.05% BSA, 50% glycerol, pH7.3.

Validation Data



Western blot analysis of lysates from Mouse placenta using Yipf6 Rabbit mAb (A25920) at 1:1000 dilution incubated overnight at 4°C.

Secondary antibody: HRP-conjugated Goat anti-Rabbit IgG (H+L) (AS014) at 1:10000 dilution.

Lysates/proteins: 25 µg per lane.

Blocking buffer: 3% nonfat dry milk in TBST.

Detection: ECL Basic Kit (RM00020).

Exposure time: 90s.