

CD11a Rabbit mAb

Catalog No.: A25929 **Recombinant**

Basic Information

Observed MW

180kDa

Calculated MW

128kDa

Category

Primary antibody

Applications

ELISA, WB, FC

Cross-Reactivity

Mouse, Rat

CloneNo number

ARC67614

Background

Predicted to enable ICAM-3 receptor activity and cell adhesion molecule binding activity. Involved in cell-cell adhesion. Acts upstream of or within several processes, including activated T cell proliferation; positive regulation of T cell proliferation; and positive regulation of calcium-mediated signaling. Located in cell-cell junction; external side of plasma membrane; and immunological synapse. Is expressed in heart; hemolymphoid system; and vault of skull. Orthologous to human ITGAL (integrin subunit alpha L).

Recommended Dilutions

WB 1:500 - 1:1000

FC 1:500 - 1:1000

Immunogen Information

Gene ID

16408

Swiss Prot

P24063

Immunogen

Recombinant fusion protein containing a sequence corresponding to amino acids 149-340 of mouse CD11a (NP_001240801.1).

Synonyms

Cd11a; LFA-1; Ly-15; Ly-21; (p180); LFA-1A

Contact

☎ | 400-999-6126

✉ | cn.market@abclonal.com.cn

🌐 | www.abclonal.com.cn

Product Information

Source

Rabbit

Isotype

IgG

Purification

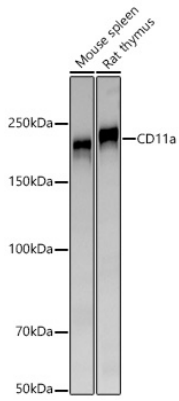
Affinity purification

Storage

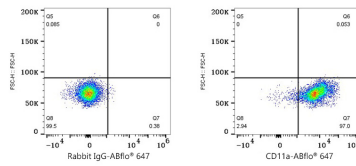
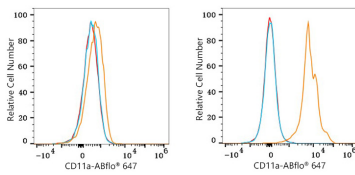
Store at -20°C. Avoid freeze / thaw cycles.

Buffer: PBS with 0.05% proclin300, 0.05% BSA, 50% glycerol, pH7.3.

Validation Data



Western blot analysis of various lysates using CD11a Rabbit mAb (A25929) at 1:1000 dilution incubated overnight at 4°C.
 Secondary antibody: HRP-conjugated Goat anti-Rabbit IgG (H+L) (AS014) at 1:10000 dilution.
 Lysates/proteins: 25 µg per lane.
 Blocking buffer: 3% nonfat dry milk in TBST.
 Detection: ECL Basic Kit (RM00020).
 Exposure time: 90s.



Flow cytometry: 1×10^6 NIH/3T3 cells (Low Expression, left) and C57BL/6 mouse splenocytes (right) were surface-stained with CD11a Rabbit mAb (A25929, 2 µg/mL, orange line) or Rabbit IgG isotype control (AC042, 2 µg/mL, blue line), followed by Alexa Fluor® 647 conjugated goat anti-rabbit pAb staining. Non-fluorescently stained cells were used as blank control (red line).

Flow cytometry: 1×10^6 C57BL/6 mouse splenocytes were surface-stained with Rabbit IgG isotype control (AC042, 2 µg/mL, left) or CD11a Rabbit mAb (A25929, 2 µg/mL, right), followed by Alexa Fluor® 647 conjugated goat anti-rabbit pAb staining.