

# ABflo® 488 Rabbit anti-Mouse CD162/PSGL-1 mAb

Catalog No.: A25940

## Basic Information

### Observed MW

### Calculated MW

44kDa

### Category

Primary antibody

### Applications

FC

### Cross-Reactivity

Mouse

### CloneNo number

ARC66571-ABflo488

### Conjugate

ABflo® 488. Ex:491nm. Em:516nm.

## Recommended Dilutions

FC 5 µl per 10<sup>6</sup> cells in  
100 µl volume

## Background

Involved in leukocyte adhesive activation. Acts upstream of or within leukocyte tethering or rolling. Predicted to be located in plasma membrane raft and uropod. Predicted to be active in plasma membrane. Is expressed in brain and thymus primordium. Human ortholog(s) of this gene implicated in carotid artery disease. Orthologous to human SELPLG (selectin P ligand).

## Immunogen Information

### Gene ID

20345

### Swiss Prot

Q3TA56

### Immunogen

Recombinant fusion protein containing a sequence corresponding to amino acids 18-320 of mouse CD162/PSGL-1 (NP\_033177.3).

### Synonyms

CD162; Psgl1; Selp1; Selpl; Psgl-1

## Contact

☎ | 400-999-6126

✉ | [cn.market@abclonal.com.cn](mailto:cn.market@abclonal.com.cn)

🌐 | [www.abclonal.com.cn](http://www.abclonal.com.cn)

## Product Information

### Source

Rabbit

### Isotype

IgG

### Purification

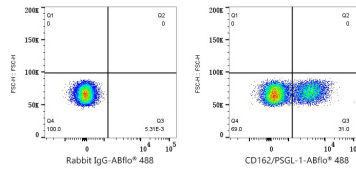
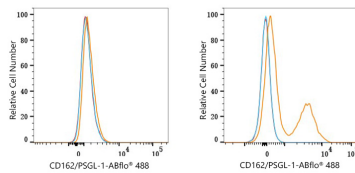
Affinity purification

### Storage

Store at 2-8°C. Avoid freeze.

Buffer: PBS with 0.03% proclin300,0.2% BSA,pH7.3.

## Validation Data



Flow cytometry: 1X10<sup>6</sup> NIH/3T3 cells (negative control, left) and C57BL/6 mouse splenocytes cells (right) were surface-stained with ABflo® 488 Rabbit anti-Mouse CD162/PSGL-1 mAb (A25940,5 µl/Test, orange line) or ABflo® 488 Rabbit IgG isotype control (A22069,5 µl/Test, blue line). Non-fluorescently stained cells were used as blank control (red line).

Flow cytometry: 1X10<sup>6</sup> C57BL/6 mouse splenocytes cells were surface-stained with ABflo® 488 Rabbit IgG isotype control (A22069,5 µl/Test, left) or ABflo® 488 Rabbit anti-Mouse CD162/PSGL-1 mAb (A25940,5 µl/Test, right).