

ABflo® 700 Rabbit anti-Mouse CD8a mAb

Catalog No.: A25944

Basic Information

Observed MW

Refer to figures

Calculated MW

27kDa

Category

Primary antibody

Applications

FC

Cross-Reactivity

Mouse

CloneNo number

ARC60677-ABflo700

Conjugate

ABflo® 700. Ex:690nm. Em:713nm.

Recommended Dilutions

FC 5 μ l per 10^6 cells in
100 μ l volume

Background

Enables identical protein binding activity. Acts upstream of or within several processes, including cytotoxic T cell differentiation; defense response to virus; and positive regulation of calcium-mediated signaling. Located in external side of plasma membrane. Is expressed in several structures, including endocrine gland; exocrine gland; genitourinary system; gut; and hemolymphoid system gland. Orthologous to human CD8A (CD8a molecule).

Immunogen Information

Gene ID

12525

Swiss Prot

P01731

Immunogen

Recombinant fusion protein containing a sequence corresponding to amino acids 28-196 of mouse CD8a (NP_001074579.1).

Synonyms

Ly-2; Ly-B; Ly-35; Lyt-2

Contact

☎ | 400-999-6126

✉ | cn.market@abclonal.com.cn

🌐 | www.abclonal.com.cn

Product Information

Source

Rabbit

Isotype

IgG

Purification

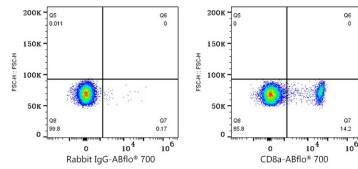
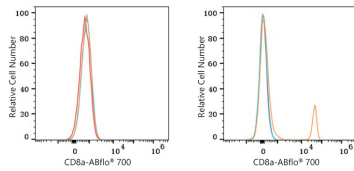
Affinity purification

Storage

Store at 2-8°C. Avoid freeze.

Buffer: PBS with 0.03% proclin300,0.2% BSA,pH7.3.

Validation Data



Flow cytometry: 1×10^6 RAW 264.7 cells (negative control, left) and C57BL/6 mouse splenocytes (right) were surface-stained with ABflo® 700 Rabbit anti-Mouse CD8a mAb (A25944, 5 μ l/Test, orange line) or ABflo® 700 Rabbit IgG isotype control (A25976, 5 μ l/Test, blue line). Non-fluorescently stained cells were used as blank control (red line).

Flow cytometry: 1×10^6 C57BL/6 mouse splenocytes were surface-stained with ABflo® 700 Rabbit IgG isotype control (A25976, 5 μ l/Test, left) or ABflo® 700 Rabbit anti-Mouse CD8a mAb (A25944, 5 μ l/Test, right).