

# ABflo® 647 Rabbit anti-Human GATA3 mAb

Catalog No.: A25946

## Basic Information

### Observed MW

### Calculated MW

48kDa

### Category

Primary antibody

### Applications

FC (intra)

### Cross-Reactivity

Human

### CloneNo number

ARC67910-ABflo647

### Conjugate

ABflo® 647. Ex:648nm. Em:664nm.

## Recommended Dilutions

**FC (intra)**      5 µl per 10<sup>6</sup> cells in  
100 µl volume

## Background

This gene encodes a protein which belongs to the GATA family of transcription factors. The protein contains two GATA-type zinc fingers and is an important regulator of T-cell development and plays an important role in endothelial cell biology. Defects in this gene are the cause of hypoparathyroidism with sensorineural deafness and renal dysplasia.

## Immunogen Information

### Gene ID

2625

### Swiss Prot

P23771

### Immunogen

Recombinant fusion protein containing a sequence corresponding to amino acids 1-200 of human GATA3 (NP\_001002295.1).

### Synonyms

HDR; HDRS

## Contact

☎ | 400-999-6126

✉ | [cn.market@abclonal.com.cn](mailto:cn.market@abclonal.com.cn)

🌐 | [www.abclonal.com.cn](http://www.abclonal.com.cn)

## Product Information

### Source

Rabbit

### Isotype

IgG

### Purification

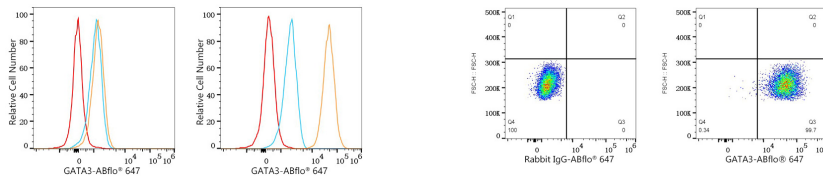
Affinity purification

### Storage

Store at 2-8°C. Avoid freeze.

Buffer: PBS with 0.03% proclin300,0.2% BSA,pH7.3.

## Validation Data



Flow cytometry:  $1 \times 10^6$  Raji cells (negative control, left) and MCF7 cells (right) were intracellularly-stained with ABflo® 647 Rabbit anti-Human GATA3 mAb (A25946, 5  $\mu$ l/Test, orange line) or ABflo® 647 Rabbit IgG isotype control (A22070, 5  $\mu$ l/Test, blue line). Non-fluorescently stained cells were used as blank control (red line).

Flow cytometry:  $1 \times 10^6$  MCF7 cells were intracellularly-stained with ABflo® 647 Rabbit IgG isotype control (A22070, 5  $\mu$ l/Test, left) or ABflo® 647 Rabbit anti-Human GATA3 mAb (A25946, 5  $\mu$ l/Test, right).