

ABflo® 700 Rabbit anti-Mouse CD162/PSGL-1 mAb

Catalog No.: A25947

Basic Information

Observed MW

Calculated MW

44kDa

Category

Primary antibody

Applications

FC

Cross-Reactivity

Mouse

CloneNo number

ARC66571-ABflo700

Conjugate

ABflo® 700. Ex:690nm. Em:713nm.

Background

Involved in leukocyte adhesive activation. Acts upstream of or within leukocyte tethering or rolling. Predicted to be located in plasma membrane raft and uropod. Predicted to be active in plasma membrane. Is expressed in brain and thymus primordium. Human ortholog(s) of this gene implicated in carotid artery disease. Orthologous to human SELPLG (selectin P ligand).

Recommended Dilutions

FC 5 µl per 10⁶ cells in
100 µl volume

Immunogen Information

Gene ID

20345

Swiss Prot

Q3TA56

Immunogen

Recombinant fusion protein containing a sequence corresponding to amino acids 18-320 of mouse CD162/PSGL-1 (NP_033177.3).

Synonyms

CD162; Psgl1; Selp1; Selpl; Psgl-1

Contact

☎ | 400-999-6126

✉ | cn.market@abclonal.com.cn

🌐 | www.abclonal.com.cn

Product Information

Source

Rabbit

Isotype

IgG

Purification

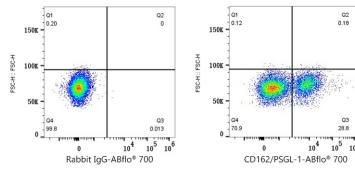
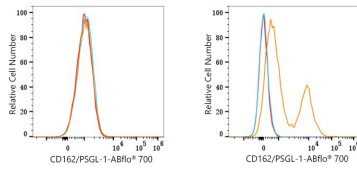
Affinity purification

Storage

Store at 2-8°C. Avoid freeze.

Buffer: PBS with 0.03% proclin300,0.2% BSA,pH7.3.

Validation Data



Flow cytometry: 1×10^6 NIH/3T3 cells (negative control, left) and C57BL/6 mouse splenocytes cells (right) were surface-stained with ABflo® 700 Rabbit anti-Mouse CD162/PSGL-1 mAb (A25947, 5 μ l/Test, orange line) or ABflo® 700 Rabbit IgG isotype control (5 μ l/Test, blue line). Non-fluorescently stained cells were used as blank control (red line).

Flow cytometry: 1×10^6 C57BL/6 mouse splenocytes cells were surface-stained with ABflo® 700 Rabbit IgG isotype control (5 μ l/Test, left) or ABflo® 700 Rabbit anti-Mouse CD162/PSGL-1 mAb (A25947, 5 μ l/Test, right).