

CD162/PSGL-1 Rabbit mAb

Catalog No.: A25952 **Recombinant**

Basic Information

Observed MW

Calculated MW

44kDa

Category

Primary antibody

Applications

ELISA, IHC-P, IF/ICC, FC

Cross-Reactivity

Mouse, Rat

CloneNo number

ARC66570

Background

Involved in leukocyte adhesive activation. Acts upstream of or within leukocyte tethering or rolling. Predicted to be located in plasma membrane raft and uropod. Predicted to be active in plasma membrane. Is expressed in brain and thymus primordium. Human ortholog(s) of this gene implicated in carotid artery disease. Orthologous to human SELPLG (selectin P ligand).

Recommended Dilutions

IHC-P	1:50 - 1:200
IF/ICC	1:50 - 1:200
FC	1:100 - 1:500

Immunogen Information

Gene ID

20345

Swiss Prot

Q3TA56

Immunogen

Recombinant fusion protein containing a sequence corresponding to amino acids 18-320 of mouse CD162/PSGL-1 (NP_033177.3).

Synonyms

CD162; Psgl1; Selp1; Selpl; Psgl-1

Contact

 | 400-999-6126

 | cn.market@abclonal.com.cn

 | www.abclonal.com.cn

Product Information

Source

Rabbit

Isotype

IgG

Purification

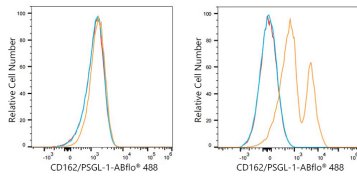
Affinity purification

Storage

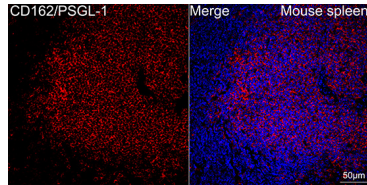
Store at -20°C. Avoid freeze / thaw cycles.

Buffer: PBS with 0.05% proclin300, 0.05% BSA, 50% glycerol, pH7.3.

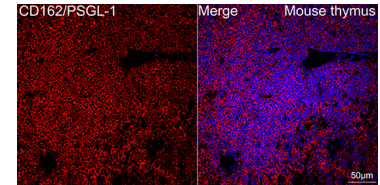
Validation Data



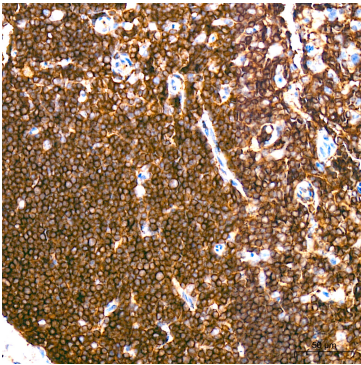
Flow cytometry: 1×10^6 NIH/3T3 cells (negative control, left) and C57BL/6 mouse splenocytes (right) were surface-stained with CD162/PSGL-1 Rabbit mAb (A25952, 2 $\mu\text{g}/\text{mL}$, orange line) or Rabbit IgG isotype control (AC042, 2 $\mu\text{g}/\text{mL}$, blue line), followed by FITC conjugated goat anti-Rabbit pAb staining. Non-fluorescently stained cells were used as blank control (red line).



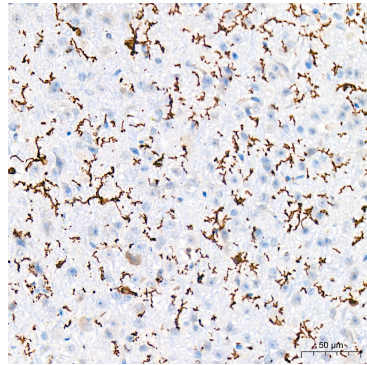
Confocal imaging of paraffin-embedded Mouse spleen tissue using CD162/PSGL-1 Rabbit mAb (A25952, dilution 1:200) followed by a further incubation with Cy3 Goat Anti-Rabbit IgG (H+L) (AS007, dilution 1:500) (Red). DAPI was used for nuclear staining (Blue). High pressure antigen retrieval performed with 0.01M Citrate Buffer (pH 6.0) prior to IF staining. Objective: 40x.



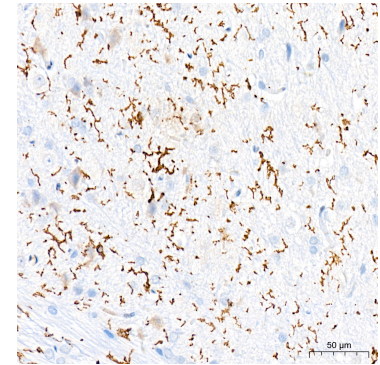
Confocal imaging of paraffin-embedded Mouse thymus tissue using CD162/PSGL-1 Rabbit mAb (A25952, dilution 1:200) followed by a further incubation with Cy3 Goat Anti-Rabbit IgG (H+L) (AS007, dilution 1:500) (Red). DAPI was used for nuclear staining (Blue). High pressure antigen retrieval performed with 0.01M Citrate Buffer (pH 6.0) prior to IF staining. Objective: 40x.



Immunohistochemistry analysis of paraffin-embedded Mouse spleen tissue using CD162/PSGL-1 Rabbit mAb (A25952) at a dilution of 1:200 (40x lens). High pressure antigen retrieval performed with 0.01M Citrate Buffer (pH 6.0) prior to IHC staining.



Immunohistochemistry analysis of paraffin-embedded Mouse brain tissue using CD162/PSGL-1 Rabbit mAb (A25952) at a dilution of 1:200 (40x lens). High pressure antigen retrieval performed with 0.01M Citrate Buffer (pH 6.0) prior to IHC staining.



Immunohistochemistry analysis of paraffin-embedded Rat brain tissue using CD162/PSGL-1 Rabbit mAb (A25952) at a dilution of 1:200 (40x lens). High pressure antigen retrieval performed with 0.01M Citrate Buffer (pH 6.0) prior to IHC staining.