

GM-CSF Rabbit mAb

Catalog No.: A25953 **Recombinant**

Basic Information

Observed MW

20-35kDa Recombinant Protein

Calculated MW

16kDa

Category

Primary antibody

Applications

ELISA, WB, IF/ICC

Cross-Reactivity

Mouse

CloneNo number

ARC67891

Background

Enables cytokine activity. Acts upstream of or within several processes, including embryonic placenta development; myeloid leukocyte differentiation; and positive regulation of cell population proliferation. Located in extracellular space. Is expressed in several structures, including genitourinary system; hemolymphoid system; labyrinthine zone; liver; and lung. Used to study pulmonary alveolar proteinosis. Human ortholog(s) of this gene implicated in acute myeloid leukemia; juvenile myelomonocytic leukemia; neutropenia; pulmonary alveolar proteinosis; and visceral leishmaniasis. Orthologous to human CSF2 (colony stimulating factor 2).

Recommended Dilutions

WB 1:500 - 1:1000

IF/ICC 1:50 - 1:200

Immunogen Information

Gene ID

12981

Swiss Prot

P01587

Immunogen

Recombinant fusion protein containing a sequence corresponding to amino acids 18-141 of mouse GM-CSF (NP_034099.2).

Synonyms

CSF; Csfgm; GMCSF; Gm-CSf; MGI-IGM

Contact

 | 400-999-6126

 | cn.market@abclonal.com.cn

 | www.abclonal.com.cn

Product Information

Source

Rabbit

Isotype

IgG

Purification

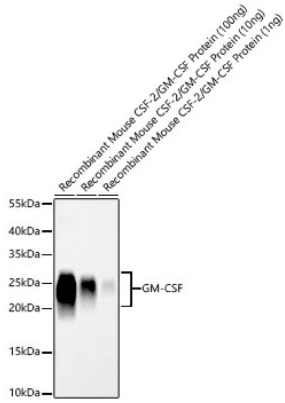
Affinity purification

Storage

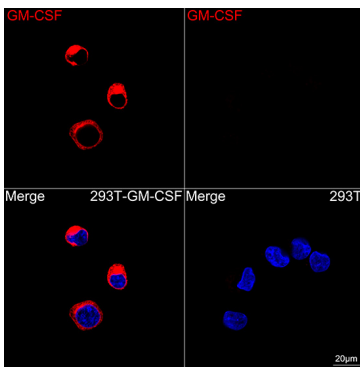
Store at -20°C. Avoid freeze / thaw cycles.

Buffer: PBS with 0.09% Sodium azide, 0.05% BSA, 50% glycerol, pH7.3.

Validation Data



Western blot analysis of recombinant Mouse CSF-2/GM-CSF Protein (RP01206) using GM-CSF Rabbit mAb (A25953) at 1:1000 dilution incubated overnight at 4°C.
Secondary antibody: HRP-conjugated Goat anti-Rabbit IgG (H+L) (AS014) at 1:10000 dilution.
Lysates/proteins: 100ng/10ng/1ng per lane.
Blocking buffer: 3% nonfat dry milk in TBST.
Detection: ECL Basic Kit (RM00020).
Exposure time: 30s.



Confocal imaging of 293T cells transfected with GM-CSF using GM-CSF Rabbit mAb (A25953, dilution 1:200) followed by a further incubation with Cy3 Goat Anti-Rabbit IgG (H+L) (AS007, dilution 1:500) (Red). DAPI was used for nuclear staining (Blue). Objective: 100x.