

GATA3 Rabbit mAb

Catalog No.: A25955 **Recombinant**

Basic Information

Observed MW

Refer to figures

Calculated MW

48kDa

Category

Primary antibody

Applications

ELISA,IF/ICC,FC (intra)

Cross-Reactivity

Human

CloneNo number

ARC67910

Background

This gene encodes a protein which belongs to the GATA family of transcription factors. The protein contains two GATA-type zinc fingers and is an important regulator of T-cell development and plays an important role in endothelial cell biology. Defects in this gene are the cause of hypoparathyroidism with sensorineural deafness and renal dysplasia.

Recommended Dilutions

IF/ICC 1:50 - 1:200

FC (intra) 1:500 - 1:1000

Immunogen Information

Gene ID

2625

Swiss Prot

P23771

Immunogen

Recombinant fusion protein containing a sequence corresponding to amino acids 1-200 of human GATA3 (NP_001002295.1).

Synonyms

HDR; HDRS

Contact

☎ | 400-999-6126

✉ | cn.market@abclonal.com.cn

🌐 | www.abclonal.com.cn

Product Information

Source

Rabbit

Isotype

IgG

Purification

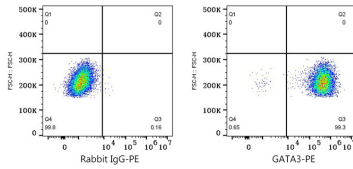
Affinity purification

Storage

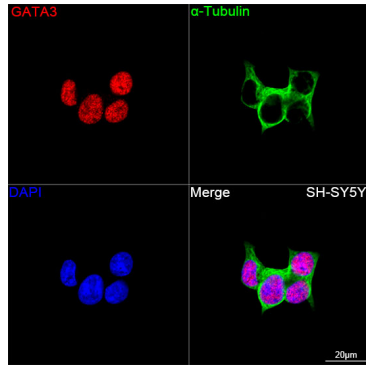
Store at -20°C. Avoid freeze / thaw cycles.

Buffer: PBS with 0.05% proclin300,0.05% BSA,50% glycerol,pH7.3.

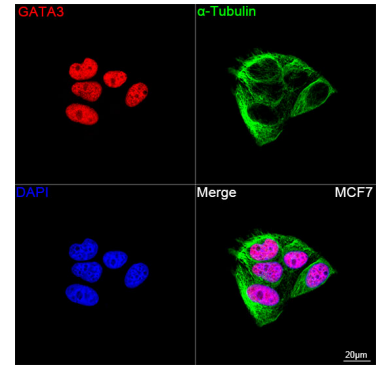
Validation Data



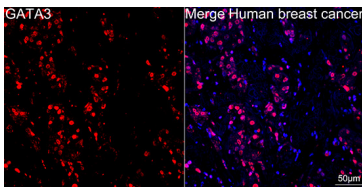
Flow cytometry: 1×10^6 MCF7 cells were intracellularly-stained with Rabbit IgG isotype control (AC042, 2 $\mu\text{g}/\text{mL}$, left) or GATA3 Rabbit mAb (A25955, 2 $\mu\text{g}/\text{mL}$, right), followed by PE conjugated Donkey anti-rabbit pAb staining.



Confocal imaging of SH-SY5Y cells using GATA3 Rabbit mAb (A25955, dilution 1:200) followed by a further incubation with Cy3 Goat Anti-Rabbit IgG (H+L) (AS007, dilution 1:500) (Red). The cells were counterstained with α -Tubulin Mouse mAb (AC012, dilution 1:400) followed by incubation with ABflo[®] 488-conjugated Goat Anti-Mouse IgG (H+L) Ab (AS076, dilution 1:500) (Green). DAPI was used for nuclear staining (Blue). Objective: 100x.



Confocal imaging of MCF7 cells using GATA3 Rabbit mAb (A25955, dilution 1:200) followed by a further incubation with Cy3 Goat Anti-Rabbit IgG (H+L) (AS007, dilution 1:500) (Red). The cells were counterstained with α -Tubulin Mouse mAb (AC012, dilution 1:400) followed by incubation with ABflo[®] 488-conjugated Goat Anti-Mouse IgG (H+L) Ab (AS076, dilution 1:500) (Green). DAPI was used for nuclear staining (Blue). Objective: 100x.



Confocal imaging of paraffin-embedded Human breast cancer tissue using GATA3 Rabbit mAb (A25955, dilution 1:200) followed by a further incubation with Cy3 Goat Anti-Rabbit IgG (H+L) (AS007, dilution 1:500) (Red). DAPI was used for nuclear staining (Blue). High pressure antigen retrieval performed with 0.01M Citrate Buffer (pH 6.0) prior to IF staining. Objective: 40x.