

DLL4 Rabbit mAb

Catalog No.: A25956 **Recombinant**

Basic Information

Observed MW

75-80kDa

Calculated MW

75kDa

Category

Primary antibody

Applications

WB,IP,FC,ELISA

Cross-Reactivity

Human

CloneNo number

ARC67406

Background

This gene is a homolog of the Drosophila delta gene. The delta gene family encodes Notch ligands that are characterized by a DSL domain, EGF repeats, and a transmembrane domain.

Recommended Dilutions

WB 1:500 - 1:1000

IP 0.5µg-4µg antibody for
400µg-600µg extracts of
whole cells

FC 1:500 - 1:1000

ELISA Recommended starting
concentration is 1 µg/mL.
Please optimize the
concentration based on
your specific assay
requirements.

Immunogen Information

Gene ID

54567

Swiss Prot

Q9NR61

Immunogen

Recombinant fusion protein containing a sequence corresponding to amino acids 27-524 of human DLL4 (NP_061947.1).

Synonyms

AOS6; delta4; hdelta2

Contact

☎ | 400-999-6126

✉ | cn.market@abclonal.com.cn

🌐 | www.abclonal.com.cn

Product Information

Source

Rabbit

Isotype

IgG

Purification

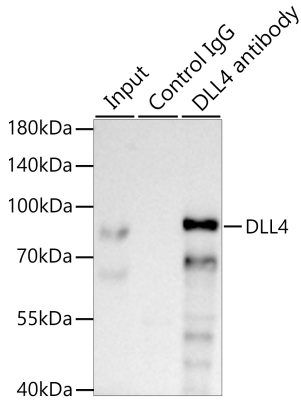
Affinity purification

Storage

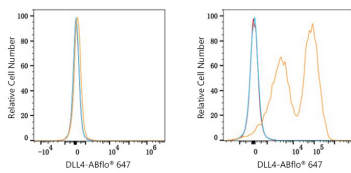
Store at -20°C. Avoid freeze / thaw cycles.

Buffer: PBS with 0.05% proclin300,0.05% BSA,50% glycerol,pH7.3.

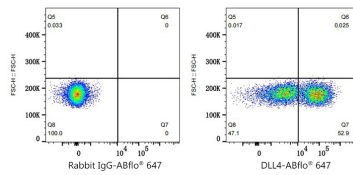
Validation Data



Immunoprecipitation of DLL4 from 500 µg extracts of 293F cells transfected with DLL4 was performed using 2 µg of DLL4 Rabbit mAb (A25956). Rabbit IgG isotype control (AC042) was used to precipitate the Control IgG sample. IP samples were eluted with 1X non-reducing Laemmli Buffer. The Input lane represents 10 % of the total input. Western blot analysis of immunoprecipitates was conducted using DLL4 Rabbit mAb (A25956) at a dilution of 1:1000.



Flow cytometry: 1×10^6 293T cells (negative control, left) and 293T (Transfection, right) cells were surface-stained with DLL4 Rabbit mAb (A25956, 2 µg/mL, orange line) or Rabbit IgG isotype control (AC042, 2 µg/mL, blue line), followed by Alexa Fluor® 647 conjugated goat anti-rabbit pAb staining. Non-fluorescently stained cells were used as blank control (red line).



Flow cytometry: 1×10^6 293T (Transfection, right) cells were surface-stained with Rabbit IgG isotype control (AC042, 2 µg/mL, left) or DLL4 Rabbit mAb (A25956, 2 µg/mL, right), followed by Alexa Fluor® 647 conjugated goat anti-rabbit pAb staining.