

# PE Rabbit anti-Mouse CD22 mAb

Catalog No.: A25960

## Basic Information

### Observed MW

Refer to figures

### Calculated MW

89kDa/93kDa/97kDa

### Category

Primary antibody

### Applications

FC

### Cross-Reactivity

Mouse

### CloneNo number

ARC62722

### Conjugate

PE. Ex:565nm. Em:574nm.

## Recommended Dilutions

FC 5  $\mu$ l per  $10^6$  cells in  
100  $\mu$ l volume

## Background

Enables CD4 receptor binding activity; protein phosphatase binding activity; and sialic acid binding activity. Involved in several processes, including negative regulation of calcium-mediated signaling; negative regulation of immunoglobulin production; and regulation of B cell proliferation. Located in external side of plasma membrane and neuronal cell body membrane. Is integral component of plasma membrane. Is expressed in several structures, including alimentary system; brain; hemolymphoid system gland; liver and biliary system; and reproductive system. Orthologous to human CD22 (CD22 molecule).

## Immunogen Information

### Gene ID

12483

### Swiss Prot

P35329

### Immunogen

Recombinant protein (or fragment). This information is considered to be commercially sensitive.

### Synonyms

Lyb8; Lyb-8; A530093D23

## Contact

☎ | 400-999-6126

✉ | [cn.market@abclonal.com.cn](mailto:cn.market@abclonal.com.cn)

🌐 | [www.abclonal.com.cn](http://www.abclonal.com.cn)

## Product Information

### Source

Rabbit

### Isotype

IgG

### Purification

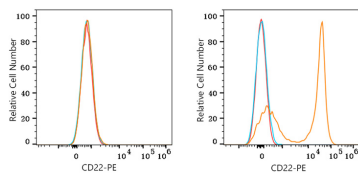
Affinity purification

### Storage

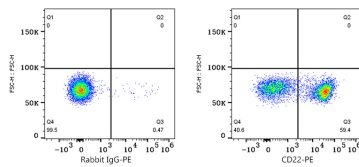
Store at 2-8°C. Avoid freeze.

Buffer: PBS with 0.09% Sodium azide, 0.2% BSA, pH7.3.

## Validation Data



Flow cytometry:  $1 \times 10^6$  NIH/3T3 cells (negative control, left) and C57BL/6 mouse splenocytes (right) were surface-stained with PE Rabbit anti-Mouse CD22 mAb (A25960, 5  $\mu$ l/Test, orange line) or PE Rabbit IgG isotype control (A24172, 5  $\mu$ l/Test, blue line). Non-fluorescently stained cells were used as blank control (red line).



Flow cytometry:  $1 \times 10^6$  C57BL/6 mouse splenocytes were surface-stained with PE Rabbit IgG isotype control (A24172, 5  $\mu$ l/Test, left) or PE Rabbit anti-Mouse CD22 mAb (A25960, 5  $\mu$ l/Test, right).