

PE Rabbit anti-Mouse/Rat CD54/ICAM-1 mAb

Catalog No.: A25962

Basic Information

Observed MW

Calculated MW

59kDa

Category

Primary antibody

Applications

FC

Cross-Reactivity

Mouse, Rat

CloneNo number

ARC63603

Conjugate

PE. Ex:565nm. Em:574nm.

Background

This gene encodes an integral membrane protein that binds leukocyte adhesion protein LFA-1. It participates in the innate immune response.

Recommended Dilutions

FC 5 μ l per 10^6 cells in
100 μ l volume

Immunogen Information

Gene ID

15894

Swiss Prot

P13597

Immunogen

Recombinant protein (or fragment). This information is considered to be commercially sensitive.

Synonyms

CD54; Ly-47; Icam-1; MALA-2

Contact

 | 400-999-6126

 | cn.market@abclonal.com.cn

 | www.abclonal.com.cn

Product Information

Source

Rabbit

Isotype

IgG

Purification

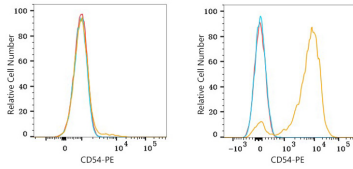
Affinity purification

Storage

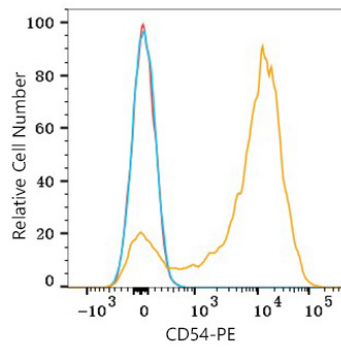
Store at 2-8°C. Avoid freeze.

Buffer: PBS with 0.09% Sodium azide, 0.2% BSA, pH7.3.

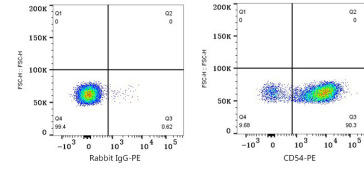
Validation Data



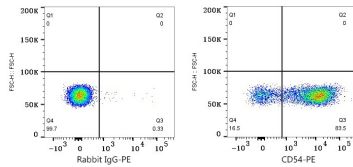
Flow cytometry: 1×10^6 C2C12 cells (negative control, left) and C57BL/6 Thymocytes (right) were surface-stained with PE Rabbit anti-Mouse/Rat CD54 mAb (A25962, 5 μ l/Test, orange line) or PE Rabbit IgG isotype control (A24172, 5 μ l/Test, blue line). Non-fluorescently stained cells were used as blank control (red line).



Flow cytometry: 1×10^6 Rat Splenocytes were surface-stained with PE Rabbit anti-Mouse/Rat CD54 mAb (A25962, 5 μ l/Test, orange line) or PE Rabbit IgG isotype control (A24172, 5 μ l/Test, blue line). Non-fluorescently stained cells were used as blank control (red line).



Flow cytometry: 1×10^6 C57BL/6 Thymocytes were surface-stained with PE Rabbit IgG isotype control (A24172, 5 μ l/Test, left) or PE Rabbit anti-Mouse/Rat CD54 mAb (A25962, 5 μ l/Test, right).



Flow cytometry: 1×10^6 Rat Splenocytes were surface-stained with PE Rabbit IgG isotype control (A24172, 5 μ l/Test, left) or PE Rabbit anti-Mouse/Rat CD54 mAb (A25962, 5 μ l/Test, right).