

ATG4A Rabbit pAb

Catalog No.: A2598

Basic Information

Observed MW

48kDa

Calculated MW

45kDa

Category

Primary antibody

Applications

ELISA, WB, IF/ICC

Cross-Reactivity

Human, Mouse, Rat

Background

Autophagy is the process by which endogenous proteins and damaged organelles are destroyed intracellularly. Autophagy is postulated to be essential for cell homeostasis and cell remodeling during differentiation, metamorphosis, non-apoptotic cell death, and aging. Reduced levels of autophagy have been described in some malignant tumors, and a role for autophagy in controlling the unregulated cell growth linked to cancer has been proposed. This gene encodes a member of the autophagin protein family. The encoded protein is also designated as a member of the C-54 family of cysteine proteases.

Recommended Dilutions

WB	1:100 - 1:500
IF/ICC	1:50 - 1:200

Immunogen Information

Gene ID

115201

Swiss Prot

Q8WYN0

Immunogen

Recombinant fusion protein containing a sequence corresponding to amino acids 210-398 of human ATG4A (NP_443168.2).

Synonyms

APG4A; AUTL2; HsAPG4A; ATG4A

Contact

	400-999-6126
	cn.market@abclonal.com.cn
	www.abclonal.com.cn

Product Information

Source

Rabbit

Isotype

IgG

Purification

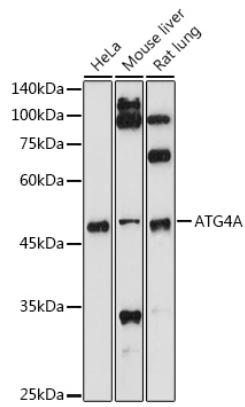
Affinity purification

Storage

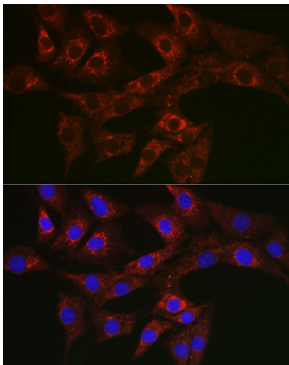
Store at -20°C. Avoid freeze / thaw cycles.

Buffer: PBS with 0.05% proclin300, 50% glycerol, pH7.3.

Validation Data



Western blot analysis of extracts of various cell lines, using ATG4A antibody (A2598) at 1:500 dilution.
Secondary antibody: HRP Goat Anti-Rabbit IgG (H+L) (AS014) at 1:10000 dilution.
Lysates/proteins: 25 μ g per lane.
Blocking buffer: 3% nonfat dry milk in TBST.
Detection: ECL Basic Kit (RM00020).
Exposure time: 180s.



Immunofluorescence analysis of NIH/3T3 cells using ATG4A Rabbit pAb (A2598) at dilution of 1:50 (40x lens). Blue: DAPI for nuclear staining.